



ROHS TEST REPORT

Applicant : Shenzhen Nanshan district followed smoke digital technology Factory

Address : Room 402, 4th Floor, Building 1, Shahe Industrial Zone, Shahe Street, Nanshan District, Shenzhen

Manufacturer : Shenzhen Nanshan district followed smoke digital technology Factory

Address : Room 402, 4th Floor, Building 1, Shahe Industrial Zone, Shahe Street, Nanshan District, Shenzhen

The following sample(s) was / were submitted and identified on behalf of the clients as :

Sample Name : Electronic cigarette

Sample Model : EVO, PRO

Model Difference : The product is different for model number and mechanical appearance.

Trademark : /

Received Date : Jan. 24, 2022

Testing Period : Jan. 24, 2022 to Jan. 25, 2022

Test Requested : Selected test(s) as requested by client

Test Method : Please refer to next page(s).

Test Result : Please refer to next page(s).

Conclusion : Based on the performed tests on submitted sample(s), the results of Lead, Mercury, Cadmium, Hexavalent chromium, Polybrominated biphenyls (PBBs), Polybrominated diphenyl ethers (PBDEs) and Phthalates such as Bis(2-ethylhexyl) phthalate (DEHP) , Butyl benzyl phthalate (BBP), Dibutyl phthalate (DBP) , and Diisobutyl phthalate (DIBP) comply with the limits as set by RoHS Directive (EU) 2015/863 amending Annex II to Directive 2011/65/EU.

Tested By: Kayla

Date: Jan. 25, 2022

Reviewed By: Megan

Date: Jan. 25, 2022

Approved By: Thomas

Date: Jan. 25, 2022



Sample Description:

No.	Name
1	RED PLASTIC
2	BLUE SOFT PLASTIC (WIER)
3	RED SOFT PLASTIC (WIER)
4	SILVERY METAL (WIER)
5	BLACK PLASTIC
6	WHITE PLASTIC
7	BLACK GLUE
8	WHITE GLUE

Remark: Unless otherwise specified, the model EVO was selected to conduct the full test.

Test Result(No.1):

Test Item(s)	Unit	Test Method(Reference)	Result	MDL	Limit
Cadmium(Cd)	mg/kg	EN 62321-5: 2013, ICP-OES	N.D.	2	100
Lead(Pb)	mg/kg	EN 62321-5: 2013, ICP-OES	N.D.	2	1000
Mercury(Hg)	mg/kg	EN 62321-4:2013+A1:2017, ICP-OES	N.D.	2	1000
Hexavalent Chromium(CrVI)	mg/kg	EN 62321-7-1:2015, EN 62321-7-2:2017, UV-Vis	N.D.	2	1000
Sum of PBBs	mg/kg	EN 62321-6: 2015, GC-MS	N.D.	--	1000
Monobromobiphenyl	mg/kg	EN 62321-6: 2015, GC-MS	N.D.	5	--
Dibromobiphenyl	mg/kg	EN 62321-6: 2015, GC-MS	N.D.	5	--
Tribromobiphenyl	mg/kg	EN 62321-6: 2015, GC-MS	N.D.	5	--
Tetrabromobiphenyl	mg/kg	EN 62321-6: 2015, GC-MS	N.D.	5	--
Pentabromobiphenyl	mg/kg	EN 62321-6: 2015, GC-MS	N.D.	5	--
Hexabromobiphenyl	mg/kg	EN 62321-6: 2015, GC-MS	N.D.	5	--
Heptabromobiphenyl	mg/kg	EN 62321-6: 2015, GC-MS	N.D.	5	--
Octabromobiphenyl	mg/kg	EN 62321-6: 2015, GC-MS	N.D.	5	--
Nonabromobiphenyl	mg/kg	EN 62321-6: 2015, GC-MS	N.D.	5	--
Decabromobiphenyl	mg/kg	EN 62321-6: 2015, GC-MS	N.D.	5	--
Sum of PBDEs	mg/kg	EN 62321-6: 2015, GC-MS	N.D.	5	1000
Monobromodiphenyl ether	mg/kg	EN 62321-6: 2015, GC-MS	N.D.	5	--
Dibromodiphenyl ether	mg/kg	EN 62321-6: 2015, GC-MS	N.D.	5	--
Tribromodiphenyl ether	mg/kg	EN 62321-6: 2015, GC-MS	N.D.	5	--
Tetrabromodiphenyl ether	mg/kg	EN 62321-6: 2015, GC-MS	N.D.	5	--
Pentabromodiphenyl ether	mg/kg	EN 62321-6: 2015, GC-MS	N.D.	5	--
Hexabromodiphenyl ether	mg/kg	EN 62321-6: 2015, GC-MS	N.D.	5	--
Heptabromodiphenyl ether	mg/kg	EN 62321-6: 2015, GC-MS	N.D.	5	--
Octabromodiphenyl ether	mg/kg	EN 62321-6: 2015, GC-MS	N.D.	5	--
Nonabromodiphenyl ether	mg/kg	EN 62321-6: 2015, GC-MS	N.D.	5	--
--Decabromodiphenyl ether	mg/kg	EN 62321-6: 2015, GC-MS	N.D.	5	--
Dibutyl Phthalate(DBP)	mg/kg	EN 62321-8:2017, GC-MS	N.D.	50	1000
Benzylbutyl Phthalate(BBP)	mg/kg	EN 62321-8:2017, GC-MS	N.D.	50	1000
Di-(2-ethylhexyl) Phthalate(DEHP)	mg/kg	EN 62321-8:2017, GC-MS	N.D.	50	1000
Diisobutyl phthalate (DIBP)	mg/kg	EN 62321-8:2017, GC-MS	N.D.	50	1000

Test Result(No.2):

Test Item(s)	Unit	Test Method(Reference)	Result	MDL	Limit
Cadmium(Cd)	mg/kg	EN 62321-5: 2013, ICP-OES	N.D.	2	100
Lead(Pb)	mg/kg	EN 62321-5: 2013, ICP-OES	N.D.	2	1000
Mercury(Hg)	mg/kg	EN 62321-4:2013+A1:2017, ICP-OES	N.D.	2	1000
Hexavalent Chromium(CrVI)	mg/kg	EN 62321-7-1:2015, EN 62321-7-2:2017, UV-Vis	N.D.	2	1000
Sum of PBBs	mg/kg	EN 62321-6: 2015, GC-MS	N.D.	--	1000
Monobromobiphenyl	mg/kg	EN 62321-6: 2015, GC-MS	N.D.	5	--
Dibromobiphenyl	mg/kg	EN 62321-6: 2015, GC-MS	N.D.	5	--
Tribromobiphenyl	mg/kg	EN 62321-6: 2015, GC-MS	N.D.	5	--
Tetrabromobiphenyl	mg/kg	EN 62321-6: 2015, GC-MS	N.D.	5	--
Pentabromobiphenyl	mg/kg	EN 62321-6: 2015, GC-MS	N.D.	5	--
Hexabromobiphenyl	mg/kg	EN 62321-6: 2015, GC-MS	N.D.	5	--
Heptabromobiphenyl	mg/kg	EN 62321-6: 2015, GC-MS	N.D.	5	--
Octabromobiphenyl	mg/kg	EN 62321-6: 2015, GC-MS	N.D.	5	--
Nonabromobiphenyl	mg/kg	EN 62321-6: 2015, GC-MS	N.D.	5	--
Decabromobiphenyl	mg/kg	EN 62321-6: 2015, GC-MS	N.D.	5	--
Sum of PBDEs	mg/kg	EN 62321-6: 2015, GC-MS	N.D.	5	1000
Monobromodiphenyl ether	mg/kg	EN 62321-6: 2015, GC-MS	N.D.	5	--
Dibromodiphenyl ether	mg/kg	EN 62321-6: 2015, GC-MS	N.D.	5	--
Tribromodiphenyl ether	mg/kg	EN 62321-6: 2015, GC-MS	N.D.	5	--
Tetrabromodiphenyl ether	mg/kg	EN 62321-6: 2015, GC-MS	N.D.	5	--
Pentabromodiphenyl ether	mg/kg	EN 62321-6: 2015, GC-MS	N.D.	5	--
Hexabromodiphenyl ether	mg/kg	EN 62321-6: 2015, GC-MS	N.D.	5	--
Heptabromodiphenyl ether	mg/kg	EN 62321-6: 2015, GC-MS	N.D.	5	--
Octabromodiphenyl ether	mg/kg	EN 62321-6: 2015, GC-MS	N.D.	5	--
Nonabromodiphenyl ether	mg/kg	EN 62321-6: 2015, GC-MS	N.D.	5	--
--Decabromodiphenyl ether	mg/kg	EN 62321-6: 2015, GC-MS	N.D.	5	--
Dibutyl Phthalate(DBP)	mg/kg	EN 62321-8:2017, GC-MS	N.D.	50	1000
Benzylbutyl Phthalate(BBP)	mg/kg	EN 62321-8:2017, GC-MS	N.D.	50	1000
Di-(2-ethylhexyl) Phthalate(DEHP)	mg/kg	EN 62321-8:2017, GC-MS	N.D.	50	1000
Diisobutyl phthalate (DIBP)	mg/kg	EN 62321-8:2017, GC-MS	N.D.	50	1000

Test Result(No.3):

Test Item(s)	Unit	Test Method(Reference)	Result	MDL	Limit
Cadmium(Cd)	mg/kg	EN 62321-5: 2013, ICP-OES	N.D.	2	100
Lead(Pb)	mg/kg	EN 62321-5: 2013, ICP-OES	N.D.	2	1000
Mercury(Hg)	mg/kg	EN 62321-4:2013+A1:2017, ICP-OES	N.D.	2	1000
Hexavalent Chromium(CrVI)	mg/kg	EN 62321-7-1:2015, EN 62321-7-2:2017, UV-Vis	N.D.	2	1000
Sum of PBBs	mg/kg	EN 62321-6: 2015, GC-MS	N.D.	--	1000
Monobromobiphenyl	mg/kg	EN 62321-6: 2015, GC-MS	N.D.	5	--
Dibromobiphenyl	mg/kg	EN 62321-6: 2015, GC-MS	N.D.	5	--
Tribromobiphenyl	mg/kg	EN 62321-6: 2015, GC-MS	N.D.	5	--
Tetrabromobiphenyl	mg/kg	EN 62321-6: 2015, GC-MS	N.D.	5	--
Pentabromobiphenyl	mg/kg	EN 62321-6: 2015, GC-MS	N.D.	5	--
Hexabromobiphenyl	mg/kg	EN 62321-6: 2015, GC-MS	N.D.	5	--
Heptabromobiphenyl	mg/kg	EN 62321-6: 2015, GC-MS	N.D.	5	--
Octabromobiphenyl	mg/kg	EN 62321-6: 2015, GC-MS	N.D.	5	--
Nonabromobiphenyl	mg/kg	EN 62321-6: 2015, GC-MS	N.D.	5	--
Decabromobiphenyl	mg/kg	EN 62321-6: 2015, GC-MS	N.D.	5	--
Sum of PBDEs	mg/kg	EN 62321-6: 2015, GC-MS	N.D.	5	1000
Monobromodiphenyl ether	mg/kg	EN 62321-6: 2015, GC-MS	N.D.	5	--
Dibromodiphenyl ether	mg/kg	EN 62321-6: 2015, GC-MS	N.D.	5	--
Tribromodiphenyl ether	mg/kg	EN 62321-6: 2015, GC-MS	N.D.	5	--
Tetrabromodiphenyl ether	mg/kg	EN 62321-6: 2015, GC-MS	N.D.	5	--
Pentabromodiphenyl ether	mg/kg	EN 62321-6: 2015, GC-MS	N.D.	5	--
Hexabromodiphenyl ether	mg/kg	EN 62321-6: 2015, GC-MS	N.D.	5	--
Heptabromodiphenyl ether	mg/kg	EN 62321-6: 2015, GC-MS	N.D.	5	--
Octabromodiphenyl ether	mg/kg	EN 62321-6: 2015, GC-MS	N.D.	5	--
Nonabromodiphenyl ether	mg/kg	EN 62321-6: 2015, GC-MS	N.D.	5	--
--Decabromodiphenyl ether	mg/kg	EN 62321-6: 2015, GC-MS	N.D.	5	--
Dibutyl Phthalate(DBP)	mg/kg	EN 62321-8:2017, GC-MS	N.D.	50	1000
Benzylbutyl Phthalate(BBP)	mg/kg	EN 62321-8:2017, GC-MS	N.D.	50	1000
Di-(2-ethylhexyl) Phthalate(DEHP)	mg/kg	EN 62321-8:2017, GC-MS	N.D.	50	1000
Diisobutyl phthalate (DIBP)	mg/kg	EN 62321-8:2017, GC-MS	N.D.	50	1000

航天检测技术（深圳）有限公司

广东省深圳市宝安区松岗街道沙浦洋涌工业区8路5号A1栋三楼

Aerospace Testing Technology (Shenzhen) Co., Ltd.

3/F, Block A1, No.5, 8th Road, Shapu Yangyong Industrial Park,

Songgang Street, Bao'an District, Shenzhen, Guangdong, China

Tel. (电话) : 0755-27781492

Fax. (传真) : 0755-27781492

Web. (网址) : www.ast-test.com

E-mail(邮箱) : ast@hangtianjc.com

Test Result(No.4):

Test Item(s)	Unit	Test Method(Reference)	Result	MDL	Limit
Cadmium(Cd)	mg/kg	EN 62321-5: 2013, ICP-OES	N.D.	2	100
Lead(Pb)	mg/kg	EN 62321-5: 2013, ICP-OES	N.D.	2	1000
Mercury(Hg)	mg/kg	EN 62321-4:2013+A1:2017, ICP-OES	N.D.	2	1000
Hexavalent Chromium(CrVI)	mg/kg	EN 62321-7-1:2015, EN 62321-7-2:2017, UV-Vis	N.D.	2	1000
Sum of PBBs	mg/kg	EN 62321-6: 2015, GC-MS	N.D.	--	1000
Monobromobiphenyl	mg/kg	EN 62321-6: 2015, GC-MS	N.D.	5	--
Dibromobiphenyl	mg/kg	EN 62321-6: 2015, GC-MS	N.D.	5	--
Tribromobiphenyl	mg/kg	EN 62321-6: 2015, GC-MS	N.D.	5	--
Tetrabromobiphenyl	mg/kg	EN 62321-6: 2015, GC-MS	N.D.	5	--
Pentabromobiphenyl	mg/kg	EN 62321-6: 2015, GC-MS	N.D.	5	--
Hexabromobiphenyl	mg/kg	EN 62321-6: 2015, GC-MS	N.D.	5	--
Heptabromobiphenyl	mg/kg	EN 62321-6: 2015, GC-MS	N.D.	5	--
Octabromobiphenyl	mg/kg	EN 62321-6: 2015, GC-MS	N.D.	5	--
Nonabromobiphenyl	mg/kg	EN 62321-6: 2015, GC-MS	N.D.	5	--
Decabromobiphenyl	mg/kg	EN 62321-6: 2015, GC-MS	N.D.	5	--
Sum of PBDEs	mg/kg	EN 62321-6: 2015, GC-MS	N.D.	5	1000
Monobromodiphenyl ether	mg/kg	EN 62321-6: 2015, GC-MS	N.D.	5	--
Dibromodiphenyl ether	mg/kg	EN 62321-6: 2015, GC-MS	N.D.	5	--
Tribromodiphenyl ether	mg/kg	EN 62321-6: 2015, GC-MS	N.D.	5	--
Tetrabromodiphenyl ether	mg/kg	EN 62321-6: 2015, GC-MS	N.D.	5	--
Pentabromodiphenyl ether	mg/kg	EN 62321-6: 2015, GC-MS	N.D.	5	--
Hexabromodiphenyl ether	mg/kg	EN 62321-6: 2015, GC-MS	N.D.	5	--
Heptabromodiphenyl ether	mg/kg	EN 62321-6: 2015, GC-MS	N.D.	5	--
Octabromodiphenyl ether	mg/kg	EN 62321-6: 2015, GC-MS	N.D.	5	--
Nonabromodiphenyl ether	mg/kg	EN 62321-6: 2015, GC-MS	N.D.	5	--
--Decabromodiphenyl ether	mg/kg	EN 62321-6: 2015, GC-MS	N.D.	5	--
Dibutyl Phthalate(DBP)	mg/kg	EN 62321-8:2017, GC-MS	N.D.	50	1000
Benzylbutyl Phthalate(BBP)	mg/kg	EN 62321-8:2017, GC-MS	N.D.	50	1000
Di-(2-ethylhexyl) Phthalate(DEHP)	mg/kg	EN 62321-8:2017, GC-MS	N.D.	50	1000
Diisobutyl phthalate (DIBP)	mg/kg	EN 62321-8:2017, GC-MS	N.D.	50	1000

航天检测技术（深圳）有限公司

广东省深圳市宝安区松岗街道沙浦洋涌工业区8路5号A1栋三楼

Aerospace Testing Technology (Shenzhen) Co., Ltd.

3/F, Block A1, No.5, 8th Road, Shapu Yangyong Industrial Park,

Songgang Street, Bao'an District, Shenzhen, Guangdong, China

Tel. (电话) : 0755-27781492

Fax. (传真) : 0755-27781492

Web. (网址) : www.ast-test.com

E-mail(邮箱) : ast@hangtianjc.com

Test Result(No.5):

Test Item(s)	Unit	Test Method(Reference)	Result	MDL	Limit
Cadmium(Cd)	mg/kg	EN 62321-5: 2013, ICP-OES	N.D.	2	100
Lead(Pb)	mg/kg	EN 62321-5: 2013, ICP-OES	N.D.	2	1000
Mercury(Hg)	mg/kg	EN 62321-4:2013+A1:2017, ICP-OES	N.D.	2	1000
Hexavalent Chromium(CrVI)	mg/kg	EN 62321-7-1:2015, EN 62321-7-2:2017, UV-Vis	N.D.	2	1000
Sum of PBBs	mg/kg	EN 62321-6: 2015, GC-MS	N.D.	--	1000
Monobromobiphenyl	mg/kg	EN 62321-6: 2015, GC-MS	N.D.	5	--
Dibromobiphenyl	mg/kg	EN 62321-6: 2015, GC-MS	N.D.	5	--
Tribromobiphenyl	mg/kg	EN 62321-6: 2015, GC-MS	N.D.	5	--
Tetrabromobiphenyl	mg/kg	EN 62321-6: 2015, GC-MS	N.D.	5	--
Pentabromobiphenyl	mg/kg	EN 62321-6: 2015, GC-MS	N.D.	5	--
Hexabromobiphenyl	mg/kg	EN 62321-6: 2015, GC-MS	N.D.	5	--
Heptabromobiphenyl	mg/kg	EN 62321-6: 2015, GC-MS	N.D.	5	--
Octabromobiphenyl	mg/kg	EN 62321-6: 2015, GC-MS	N.D.	5	--
Nonabromobiphenyl	mg/kg	EN 62321-6: 2015, GC-MS	N.D.	5	--
Decabromobiphenyl	mg/kg	EN 62321-6: 2015, GC-MS	N.D.	5	--
Sum of PBDEs	mg/kg	EN 62321-6: 2015, GC-MS	N.D.	5	1000
Monobromodiphenyl ether	mg/kg	EN 62321-6: 2015, GC-MS	N.D.	5	--
Dibromodiphenyl ether	mg/kg	EN 62321-6: 2015, GC-MS	N.D.	5	--
Tribromodiphenyl ether	mg/kg	EN 62321-6: 2015, GC-MS	N.D.	5	--
Tetrabromodiphenyl ether	mg/kg	EN 62321-6: 2015, GC-MS	N.D.	5	--
Pentabromodiphenyl ether	mg/kg	EN 62321-6: 2015, GC-MS	N.D.	5	--
Hexabromodiphenyl ether	mg/kg	EN 62321-6: 2015, GC-MS	N.D.	5	--
Heptabromodiphenyl ether	mg/kg	EN 62321-6: 2015, GC-MS	N.D.	5	--
Octabromodiphenyl ether	mg/kg	EN 62321-6: 2015, GC-MS	N.D.	5	--
Nonabromodiphenyl ether	mg/kg	EN 62321-6: 2015, GC-MS	N.D.	5	--
--Decabromodiphenyl ether	mg/kg	EN 62321-6: 2015, GC-MS	N.D.	5	--
Dibutyl Phthalate(DBP)	mg/kg	EN 62321-8:2017, GC-MS	N.D.	50	1000
Benzylbutyl Phthalate(BBP)	mg/kg	EN 62321-8:2017, GC-MS	N.D.	50	1000
Di-(2-ethylhexyl) Phthalate(DEHP)	mg/kg	EN 62321-8:2017, GC-MS	N.D.	50	1000
Diisobutyl phthalate (DIBP)	mg/kg	EN 62321-8:2017, GC-MS	N.D.	50	1000

Test Result(No.6):

Test Item(s)	Unit	Test Method(Reference)	Result	MDL	Limit
Cadmium(Cd)	mg/kg	EN 62321-5: 2013, ICP-OES	N.D.	2	100
Lead(Pb)	mg/kg	EN 62321-5: 2013, ICP-OES	N.D.	2	1000
Mercury(Hg)	mg/kg	EN 62321-4:2013+A1:2017, ICP-OES	N.D.	2	1000
Hexavalent Chromium(CrVI)	mg/kg	EN 62321-7-1:2015, EN 62321-7-2:2017, UV-Vis	N.D.	2	1000
Sum of PBBs	mg/kg	EN 62321-6: 2015, GC-MS	N.D.	--	1000
Monobromobiphenyl	mg/kg	EN 62321-6: 2015, GC-MS	N.D.	5	--
Dibromobiphenyl	mg/kg	EN 62321-6: 2015, GC-MS	N.D.	5	--
Tribromobiphenyl	mg/kg	EN 62321-6: 2015, GC-MS	N.D.	5	--
Tetrabromobiphenyl	mg/kg	EN 62321-6: 2015, GC-MS	N.D.	5	--
Pentabromobiphenyl	mg/kg	EN 62321-6: 2015, GC-MS	N.D.	5	--
Hexabromobiphenyl	mg/kg	EN 62321-6: 2015, GC-MS	N.D.	5	--
Heptabromobiphenyl	mg/kg	EN 62321-6: 2015, GC-MS	N.D.	5	--
Octabromobiphenyl	mg/kg	EN 62321-6: 2015, GC-MS	N.D.	5	--
Nonabromobiphenyl	mg/kg	EN 62321-6: 2015, GC-MS	N.D.	5	--
Decabromobiphenyl	mg/kg	EN 62321-6: 2015, GC-MS	N.D.	5	--
Sum of PBDEs	mg/kg	EN 62321-6: 2015, GC-MS	N.D.	5	1000
Monobromodiphenyl ether	mg/kg	EN 62321-6: 2015, GC-MS	N.D.	5	--
Dibromodiphenyl ether	mg/kg	EN 62321-6: 2015, GC-MS	N.D.	5	--
Tribromodiphenyl ether	mg/kg	EN 62321-6: 2015, GC-MS	N.D.	5	--
Tetrabromodiphenyl ether	mg/kg	EN 62321-6: 2015, GC-MS	N.D.	5	--
Pentabromodiphenyl ether	mg/kg	EN 62321-6: 2015, GC-MS	N.D.	5	--
Hexabromodiphenyl ether	mg/kg	EN 62321-6: 2015, GC-MS	N.D.	5	--
Heptabromodiphenyl ether	mg/kg	EN 62321-6: 2015, GC-MS	N.D.	5	--
Octabromodiphenyl ether	mg/kg	EN 62321-6: 2015, GC-MS	N.D.	5	--
Nonabromodiphenyl ether	mg/kg	EN 62321-6: 2015, GC-MS	N.D.	5	--
--Decabromodiphenyl ether	mg/kg	EN 62321-6: 2015, GC-MS	N.D.	5	--
Dibutyl Phthalate(DBP)	mg/kg	EN 62321-8:2017, GC-MS	N.D.	50	1000
Benzylbutyl Phthalate(BBP)	mg/kg	EN 62321-8:2017, GC-MS	N.D.	50	1000
Di-(2-ethylhexyl) Phthalate(DEHP)	mg/kg	EN 62321-8:2017, GC-MS	N.D.	50	1000
Diisobutyl phthalate (DIBP)	mg/kg	EN 62321-8:2017, GC-MS	N.D.	50	1000

航天检测技术（深圳）有限公司

广东省深圳市宝安区松岗街道沙浦洋涌工业区8路5号A1栋三楼

Aerospace Testing Technology (Shenzhen) Co., Ltd.

3/F, Block A1, No.5, 8th Road, Shapu Yangyong Industrial Park,

Songgang Street, Bao'an District, Shenzhen, Guangdong, China

Tel. (电话) : 0755-27781492

Fax. (传真) : 0755-27781492

Web. (网址) : www.ast-test.com

E-mail(邮箱) : ast@hangtianjc.com

Test Result(No.7):

Test Item(s)	Unit	Test Method(Reference)	Result	MDL	Limit
Cadmium(Cd)	mg/kg	EN 62321-5: 2013, ICP-OES	N.D.	2	100
Lead(Pb)	mg/kg	EN 62321-5: 2013, ICP-OES	N.D.	2	1000
Mercury(Hg)	mg/kg	EN 62321-4:2013+A1:2017, ICP-OES	N.D.	2	1000
Hexavalent Chromium(CrVI)	mg/kg	EN 62321-7-1:2015, EN 62321-7-2:2017, UV-Vis	N.D.	2	1000
Sum of PBBs	mg/kg	EN 62321-6: 2015, GC-MS	N.D.	--	1000
Monobromobiphenyl	mg/kg	EN 62321-6: 2015, GC-MS	N.D.	5	--
Dibromobiphenyl	mg/kg	EN 62321-6: 2015, GC-MS	N.D.	5	--
Tribromobiphenyl	mg/kg	EN 62321-6: 2015, GC-MS	N.D.	5	--
Tetrabromobiphenyl	mg/kg	EN 62321-6: 2015, GC-MS	N.D.	5	--
Pentabromobiphenyl	mg/kg	EN 62321-6: 2015, GC-MS	N.D.	5	--
Hexabromobiphenyl	mg/kg	EN 62321-6: 2015, GC-MS	N.D.	5	--
Heptabromobiphenyl	mg/kg	EN 62321-6: 2015, GC-MS	N.D.	5	--
Octabromobiphenyl	mg/kg	EN 62321-6: 2015, GC-MS	N.D.	5	--
Nonabromobiphenyl	mg/kg	EN 62321-6: 2015, GC-MS	N.D.	5	--
Decabromobiphenyl	mg/kg	EN 62321-6: 2015, GC-MS	N.D.	5	--
Sum of PBDEs	mg/kg	EN 62321-6: 2015, GC-MS	N.D.	5	1000
Monobromodiphenyl ether	mg/kg	EN 62321-6: 2015, GC-MS	N.D.	5	--
Dibromodiphenyl ether	mg/kg	EN 62321-6: 2015, GC-MS	N.D.	5	--
Tribromodiphenyl ether	mg/kg	EN 62321-6: 2015, GC-MS	N.D.	5	--
Tetrabromodiphenyl ether	mg/kg	EN 62321-6: 2015, GC-MS	N.D.	5	--
Pentabromodiphenyl ether	mg/kg	EN 62321-6: 2015, GC-MS	N.D.	5	--
Hexabromodiphenyl ether	mg/kg	EN 62321-6: 2015, GC-MS	N.D.	5	--
Heptabromodiphenyl ether	mg/kg	EN 62321-6: 2015, GC-MS	N.D.	5	--
Octabromodiphenyl ether	mg/kg	EN 62321-6: 2015, GC-MS	N.D.	5	--
Nonabromodiphenyl ether	mg/kg	EN 62321-6: 2015, GC-MS	N.D.	5	--
--Decabromodiphenyl ether	mg/kg	EN 62321-6: 2015, GC-MS	N.D.	5	--
Dibutyl Phthalate(DBP)	mg/kg	EN 62321-8:2017, GC-MS	N.D.	50	1000
Benzylbutyl Phthalate(BBP)	mg/kg	EN 62321-8:2017, GC-MS	N.D.	50	1000
Di-(2-ethylhexyl) Phthalate(DEHP)	mg/kg	EN 62321-8:2017, GC-MS	N.D.	50	1000
Diisobutyl phthalate (DIBP)	mg/kg	EN 62321-8:2017, GC-MS	N.D.	50	1000

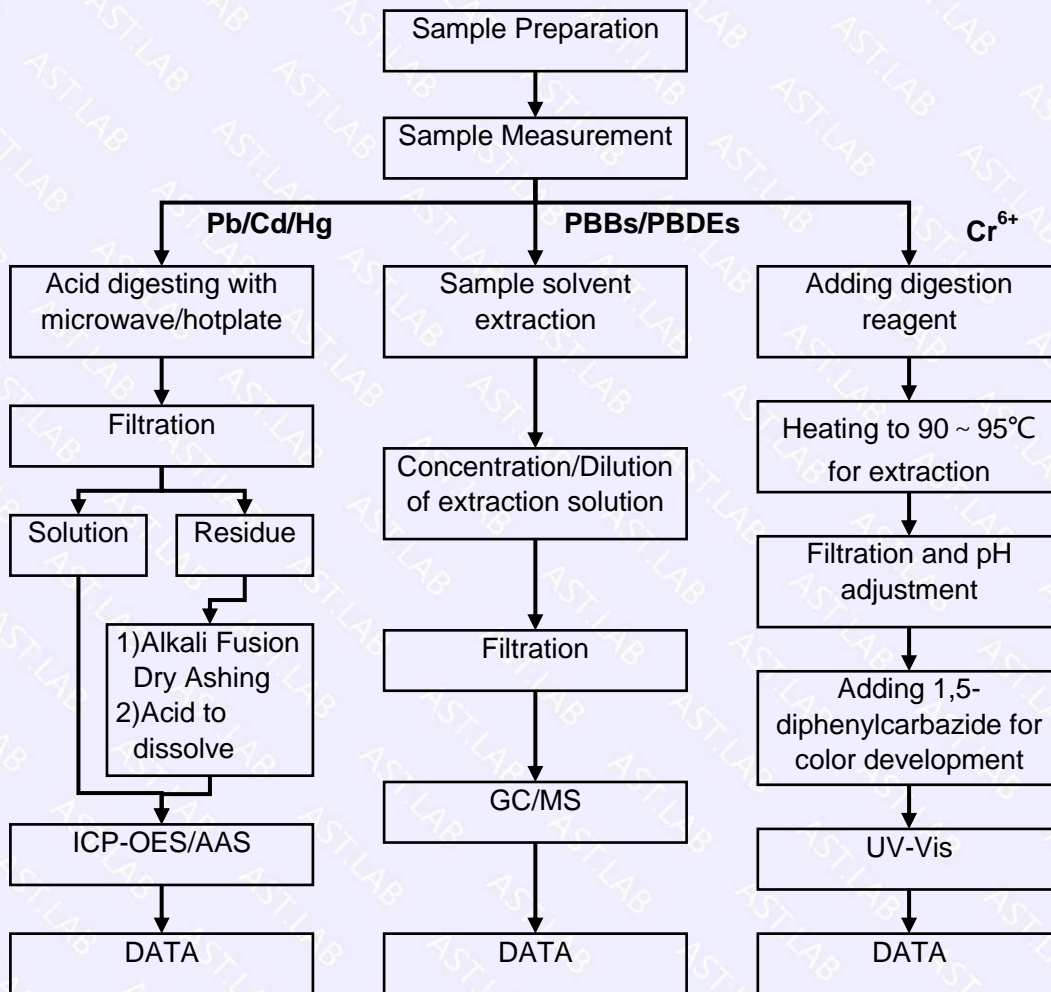
Test Result(No.8):

Test Item(s)	Unit	Test Method(Reference)	Result	MDL	Limit
Cadmium(Cd)	mg/kg	EN 62321-5: 2013, ICP-OES	N.D.	2	100
Lead(Pb)	mg/kg	EN 62321-5: 2013, ICP-OES	N.D.	2	1000
Mercury(Hg)	mg/kg	EN 62321-4:2013+A1:2017, ICP-OES	N.D.	2	1000
Hexavalent Chromium(CrVI)	mg/kg	EN 62321-7-1:2015, EN 62321-7-2:2017, UV-Vis	N.D.	2	1000
Sum of PBBs	mg/kg	EN 62321-6: 2015, GC-MS	N.D.	--	1000
Monobromobiphenyl	mg/kg	EN 62321-6: 2015, GC-MS	N.D.	5	--
Dibromobiphenyl	mg/kg	EN 62321-6: 2015, GC-MS	N.D.	5	--
Tribromobiphenyl	mg/kg	EN 62321-6: 2015, GC-MS	N.D.	5	--
Tetrabromobiphenyl	mg/kg	EN 62321-6: 2015, GC-MS	N.D.	5	--
Pentabromobiphenyl	mg/kg	EN 62321-6: 2015, GC-MS	N.D.	5	--
Hexabromobiphenyl	mg/kg	EN 62321-6: 2015, GC-MS	N.D.	5	--
Heptabromobiphenyl	mg/kg	EN 62321-6: 2015, GC-MS	N.D.	5	--
Octabromobiphenyl	mg/kg	EN 62321-6: 2015, GC-MS	N.D.	5	--
Nonabromobiphenyl	mg/kg	EN 62321-6: 2015, GC-MS	N.D.	5	--
Decabromobiphenyl	mg/kg	EN 62321-6: 2015, GC-MS	N.D.	5	--
Sum of PBDEs	mg/kg	EN 62321-6: 2015, GC-MS	N.D.	5	1000
Monobromodiphenyl ether	mg/kg	EN 62321-6: 2015, GC-MS	N.D.	5	--
Dibromodiphenyl ether	mg/kg	EN 62321-6: 2015, GC-MS	N.D.	5	--
Tribromodiphenyl ether	mg/kg	EN 62321-6: 2015, GC-MS	N.D.	5	--
Tetrabromodiphenyl ether	mg/kg	EN 62321-6: 2015, GC-MS	N.D.	5	--
Pentabromodiphenyl ether	mg/kg	EN 62321-6: 2015, GC-MS	N.D.	5	--
Hexabromodiphenyl ether	mg/kg	EN 62321-6: 2015, GC-MS	N.D.	5	--
Heptabromodiphenyl ether	mg/kg	EN 62321-6: 2015, GC-MS	N.D.	5	--
Octabromodiphenyl ether	mg/kg	EN 62321-6: 2015, GC-MS	N.D.	5	--
Nonabromodiphenyl ether	mg/kg	EN 62321-6: 2015, GC-MS	N.D.	5	--
--Decabromodiphenyl ether	mg/kg	EN 62321-6: 2015, GC-MS	N.D.	5	--
Dibutyl Phthalate(DBP)	mg/kg	EN 62321-8:2017, GC-MS	N.D.	50	1000
Benzylbutyl Phthalate(BBP)	mg/kg	EN 62321-8:2017, GC-MS	N.D.	50	1000
Di-(2-ethylhexyl) Phthalate(DEHP)	mg/kg	EN 62321-8:2017, GC-MS	N.D.	50	1000
Diisobutyl phthalate (DIBP)	mg/kg	EN 62321-8:2017, GC-MS	N.D.	50	1000

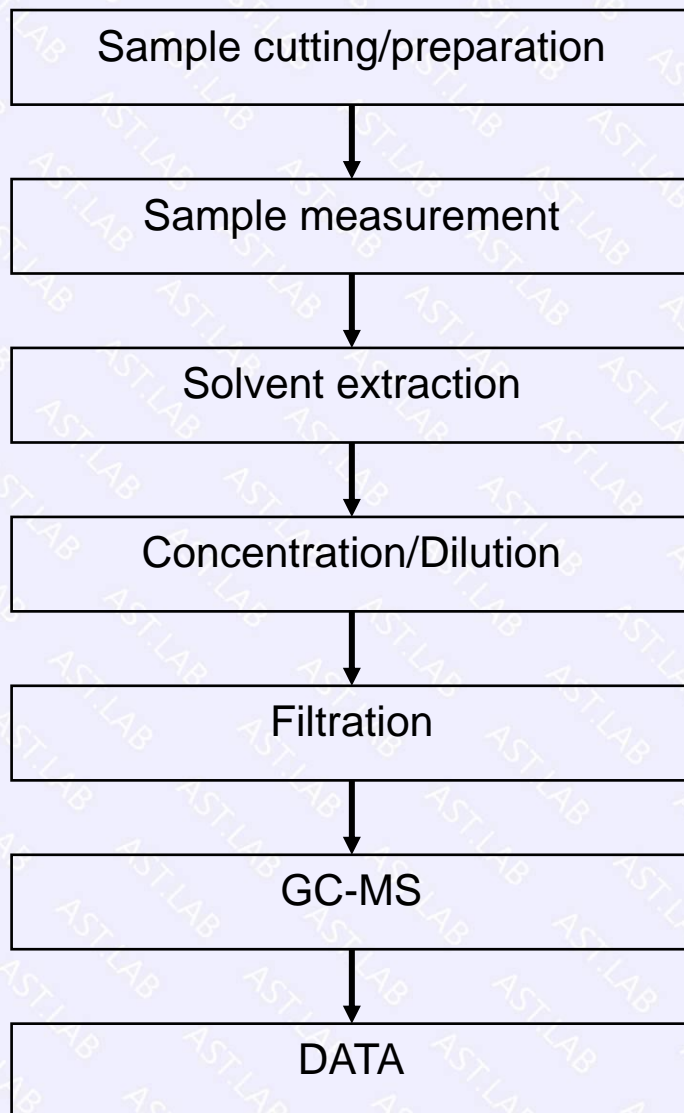
Note:

1. mg/kg= ppm
2. N.D.= No Detection(<MDL)
3. MDL = Method Detection Limit
4. -- = No Testing

ATTACHMENT: Cd/Pb/Hg/Cr⁶⁺/PBBs&PBDEs Flow Chart



ATTACHMENT: Phthalate Testing Flow Chart

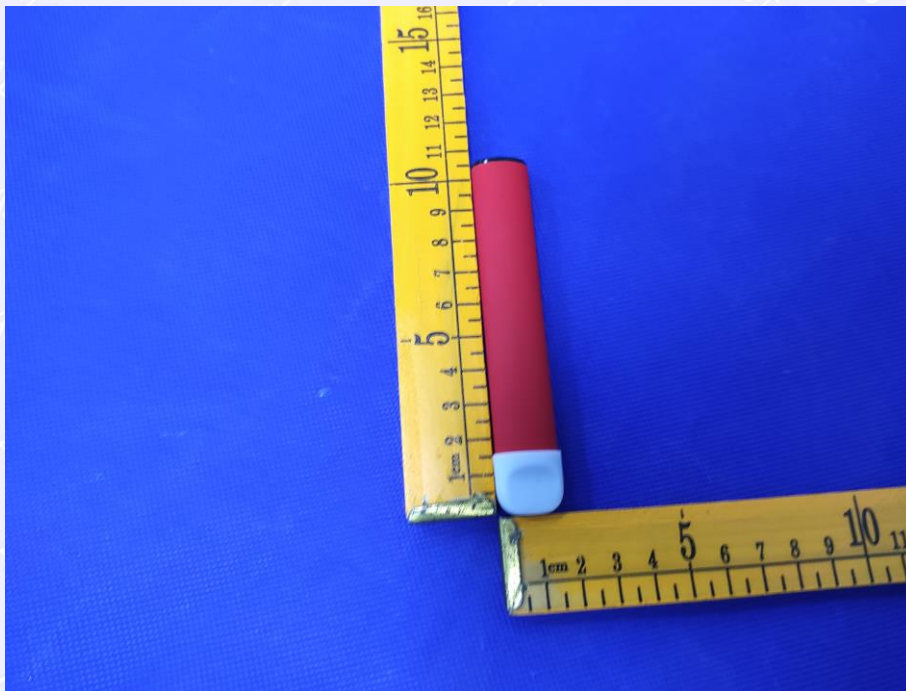


Sample photo:

EUT Photo 1



EUT Photo 2



EUT Photo 3



****End of Report****