

TEST REPORT

EN 60598-2-4

Part 2: Particular requirements: Section Four – Portable general purpose luminaires

Report reference No.: AST2203303002A-1

Tested by: Jerry Wu

Reviewed by: Done Fan

Approved by: Ron Long

Date of issue: 2022-06-01

Contents: 39 pages



Testing laboratory

Name: Aerospace Testing Technology (Shenzhen) Co., Ltd.

Address: 101, Block A4, No. 5, 8th Road, Shapu Yangyong Industrial Park,
Songgang Street, Bao'an District, Shenzhen, Guangdong, China

Testing location: Same as above

Applicant

Applicant name: FUZHOU JINHUIDA IMPORT&EXPORT CO. LTD

Address: No.3003, 30th floor, IFC building, NO.2 wanglong Roda, taijiang
District, Fz, Fj, China.

Manufacturer name: FUZHOU JINHUIDA IMPORT&EXPORT CO. LTD

Address: No.3003, 30th floor, IFC building, NO.2 wanglong Roda, taijiang
District, Fz, Fj, China.

Factory name: FUZHOU JINHUIDA IMPORT&EXPORT CO. LTD

Address: No.3003, 30th floor, IFC building, NO.2 wanglong Roda, taijiang
District, Fz, Fj, China.

Test specification

Standard: EN 60598-2-4:2018; EN 60598-1:2015+A1:2018

Test procedure: Safety

Procedure deviation: N/A

Non-standard test method: N/A

Test item

Product name: Led smart lights

Trademark: N/A

Model and/or type reference: MY2278-10, MY2275-3, MY2275-9, MY2276-4, MY2276-10,
MY2277-4, MY2277-10, MY2278-4

Rating(s): For class III luminaires: DC 24V, 1.5A

Aerospace Testing Technology (Shenzhen) Co., Ltd.

Tel.: 086-0755-27781492

Fax.: 086-0755-27781492

101, Block A4, No. 5, 8th Road, Shapu Yangyong Industrial Park,
Songgang Street, Bao'an District, Shenzhen, Guangdong, China

Web.:www.ast-test.com

E-mail: ast@hangtianjc.com

Test item particulars	See "General product information"
Classification of installation and use	Class III; portable use
Supply Connection	Supply cord with plug

Possible test case verdicts:	
- test case does not apply to the test object	N/A
- test object does meet the requirement	P (Pass)
- test object does not meet the requirement	F (Fail)

Testing	
Date of receipt of test item	2022-05-25
Date (s) of performance of tests	2022-05-25 to 2022-06-01

General remarks:

The test results presented in this report relate only to the object tested.
 This report shall not be reproduced, except in full, without the written approval of the Issuing testing laboratory.
 "(See Enclosure #)" refers to additional information appended to the report.
 "(See appended table)" refers to a table appended to the report.

Throughout this report a comma / point is used as the decimal separator.

Clause numbers between brackets refer to clauses in IEC 60598-1.


- Summary of testing:**
1. Unless otherwise specified, full tests was performed on the model MY2278-10, and the tests results complied with the requirements of the standards mentioned above.
 2. Constructions checked have been done.
 3. Attachment No. 1: National differences.
 4. Attachment No. 2: EN 62031:2008+A1:2013+A2:2015 was considered.
 5. Attachment No. 3: IEC TR 62778:2014 was considered, RG0 RG1 RG2.
 6. Only the most unfavorable results are recorded in this report.

Copy of marking plate:

Led smart lights

Model name: MY2278-10

Rating: DC 24V, 1.5A



FUZHOU JINHUIDA IMPORT&EXPORT CO.LTD

Made in China

Sticking on the luminaire enclosure

Note:



1. The height of graphical symbols shall not be less than 5 mm.

2. The height of letters and numerals either shown separately or with or as part of symbols shall not be less than 2 mm.
3. The height of WEEE symbols shall not be less than 7 mm.
4. According to the EU directives which have been aligned with EU NLF (new legislative framework), both of manufacturer and importer's name and address shall be affixed on the product or, where that is not possible, on its packaging or in a document accompanying the product before the product is placed on the EU market.

General product information:

1. The product is class III Led fairy lights.
2. The only difference between all models is the name of the model, the other are the same, there is no security impact, All tests are carried out on MY2278-10 to represent all models.

EN 60598-2-4

Clause	Requirement + Test	Result - Remark	Verdict
4.4 (0)	GENERAL TEST REQUIREMENTS		P
4.4 (0.3)	More sections applicable	Yes <input type="checkbox"/> No <input checked="" type="checkbox"/> Section/s:	—
4.4 (0.7)	Information for luminaire design in light sources standards		—
4.4 (0.7.2)	Light source safety standard	EN 62031; IEC TR 62778	—
	Luminaire design in the light source safety standard		P
4.5 (2)	CLASSIFICATION OF LUMINAIRES		P
4.5 (2.2)	Type of protection	Class III	P
4.5 (2.3)	Degree of protection	IP20	P
4.5 (2.5)	Luminaire for normal use	Yes <input checked="" type="checkbox"/> No <input type="checkbox"/>	—
	Luminaire for rough service	Yes <input type="checkbox"/> No <input checked="" type="checkbox"/>	—
4.5.1 (-)	Ordinary luminaire.....	Yes <input checked="" type="checkbox"/> No <input type="checkbox"/>	—
4.5.2 (-)	Portable luminaire for outdoor use.....	Yes <input type="checkbox"/> No <input checked="" type="checkbox"/>	—
	Classified IPX4 or higher		N/A
4.5.3 (2.4)	Luminaire suitable for direct mounting on normally flammable surfaces	Yes <input checked="" type="checkbox"/> No <input type="checkbox"/>	—
4.6 (3)	MARKING		P
4.6 (3.2)	Mandatory markings		P
	Position of the marking	Enclosure	P
	Format of symbols/text		P
4.6 (3.3)	Additional information		P
	Language of instructions	English	P
4.6 (3.3.1)	Combination luminaires		N/A
4.6 (3.3.2)	Nominal frequency in Hz		N/A
4.6 (3.3.3)	Operating temperature		N/A
4.6 (3.3.5)	Wiring diagram		N/A
4.6 (3.3.6)	Special conditions		N/A
4.6 (3.3.7)	Metal halide lamp luminaire – warning		N/A
4.6 (3.3.8)	Limitation for semi-luminaires		N/A
4.6 (3.3.9)	Power factor and supply current		N/A
4.6 (3.3.10)	Suitability for use indoors		P
4.6 (3.3.11)	Luminaires with remote control		N/A
4.6 (3.3.12)	Clip-mounted luminaire – warning		N/A
4.6 (3.3.13)	Specifications of protective shields		N/A
4.6 (3.3.14)	Symbol for nature of supply		P

EN 60598-2-4

Clause	Requirement + Test	Result - Remark	Verdict
4.6 (3.3.15)	Rated current of socket outlet		N/A
4.6 (3.3.16)	Rough service luminaire		N/A
4.6 (3.3.17)	Mounting instruction for type Y, type Z and some type X attachments	Type Y	P
4.6 (3.3.18)	Non-ordinary luminaires with PVC cable		N/A
4.6 (3.3.19)	Protective conductor current in instructions, if applicable		N/A
4.6 (3.3.20)	Provided with information if not intended to be mounted within arm's reach		N/A
4.6 (3.3.21)	Non replaceable and non-user replaceable light sources information provided	Non-user replaceable light source	P
	Cautionary symbol		N/A
4.6 (3.3.22)	Controllable luminaires, classification of insulation provided		N/A
4.6 (3.3.23)	Luminaire without controlgear provided with necessary information for selection of appropriate component	Class III	P
4.6 (3.3.24)	If not supplied with terminal block, information on the packaging		N/A
4.6 (3.4)	Test with water		P
	Test with hexane		P
	Legible after test		P
	Label attached		P
4.6.1 (-)	Luminaire not suitable for outdoor application		N/A
	Required symbol		N/A
	Information in the instructions		N/A
4.6.2 (-)	Outdoor use, socket outlet incorporated in the luminaire		N/A
	Maximum power rating marked		N/A
	Position of the marking		N/A
4.7 (4)	CONSTRUCTION		P
4.7 (4.2)	Components replaceable without difficulty		P
4.7 (4.3)	Wireways smooth and free from sharp edges		P
4.7 (4.4)	Lampholders		N/A
4.7 (4.4.1)	Integral lampholder		N/A
4.7 (4.4.2)	Wiring connection		N/A
4.7 (4.4.3)	Lampholder for end-to-end mounting		N/A
4.7 (4.4.4)	Positioning		N/A
	- pressure test (N) :		—

EN 60598-2-4

Clause	Requirement + Test	Result - Remark	Verdict
	After test the lampholder comply with relevant standard sheets and show no damage		N/A
	After test on single-capped lampholder the lampholder have not moved from its position and show no permanent deformation		N/A
	- bending test (N)		—
	After test the lampholder have not moved from its position and show no permanent deformation		N/A
4.7 (4.4.5)	Peak pulse voltage		N/A
4.7 (4.4.6)	Centre contact		N/A
4.7 (4.4.7)	Parts in rough service luminaires resistant to tracking		N/A
4.7 (4.4.8)	Lamp connectors		N/A
4.7 (4.4.9)	Caps and bases correctly used		N/A
4.7 (4.4.10)	Light source for lampholder or connection according IEC 60061 not connected another way		N/A
4.7 (4.5)	Starter holders		N/A
	Starter holder in luminaires other than class II		N/A
	Starter holder class II construction		N/A
4.7 (4.6)	Terminal blocks		N/A
	Tails		N/A
	Unsecured blocks		N/A
4.7 (4.7)	Terminals and supply connections		P
4.7 (4.7.1)	Contact to metal parts		N/A
4.7 (4.7.2)	Test 8 mm live conductor		N/A
	Test 8 mm earth conductor		N/A
4.7 (4.7.3)	Terminals for supply conductors		N/A
4.7 (4.7.3.1)	Welded method and material		P
	- stranded or solid conductor		N/A
	- spot welding		P
	- welding between wires		N/A
	- Type Z attachment		N/A
	- mechanical test according to 15.6.2		N/A
	- electrical test according to 15.6.3		N/A
	- heat test according to 15.6.3.2.3 and 15.6.3.2.4		N/A
4.7 (4.7.4)	Terminals other than supply connection		N/A
4.7 (4.7.5)	Heat-resistant wiring/sleeves		N/A
4.7 (4.7.6)	Multi-pole plug		N/A
	- test at 30 N		N/A

EN 60598-2-4

Clause	Requirement + Test	Result - Remark	Verdict
4.7 (4.8)	Switches		P
	- adequate rating		P
	- adequate fixing		P
	- polarized supply		N/A
	- compliance with IEC 61058-1 for electronic switches		N/A
4.7 (4.9)	Insulating lining and sleeves		N/A
4.7 (4.9.1)	Retention		N/A
	Method of fixing..... :	Part of luminaire	N/A
4.7 (4.9.2)	Insulated linings and sleeves:		N/A
	Resistant to a temperature > 20 °C to the wire temperature or		N/A
	a) & c) Insulation resistance and electric strength		N/A
	b) Ageing test. Temperature (°C)..... :		N/A
4.7 (4.10)	Double or reinforced insulation		P
4.7 (4.10.1)	No contact, mounting surface – accessible metal parts – wiring of basic insulation		N/A
	Safe installation fixed luminaires		N/A
	Capacitors and switches		N/A
	Interference suppression capacitors according to IEC 60384-14		N/A
4.7 (4.10.2)	Assembly gaps:		P
	- not coincidental		P
	- no straight access with test probe		P
4.7 (4.10.3)	Retention of insulation:		N/A
	- fixed		N/A
	- unable to be replaced; luminaire inoperative		N/A
	- sleeves retained in position		N/A
	- lining in lampholder		N/A
4.7 (4.10.4)	Protective impedance device		N/A
	Double or reinforced insulation bridged by appropriate and at least two resistors or two Y2 capacitors or one Y1 capacitor		N/A
	Y1 or Y2 capacitors comply with IEC 60384-14		N/A
	Resistors comply with test (a) in 14.1 of IEC 60065		N/A
4.7 (4.11)	Electrical connections and current-carrying parts		N/A
4.7 (4.11.1)	Contact pressure		N/A
4.7 (4.11.2)	Screws:		N/A

EN 60598-2-4

Clause	Requirement + Test	Result - Remark	Verdict
	- self-tapping screws		N/A
	- thread-cutting screws		N/A
4.7 (4.11.3)	Screw locking:		N/A
	- spring washer		N/A
	- rivets		N/A
4.7 (4.11.4)	Material of current-carrying parts		P
4.7 (4.11.5)	No contact to wood or mounting surface		P
4.7 (4.11.6)	Electro-mechanical contact systems		N/A
4.7 (4.12)	Screws and connections (mechanical) and glands		P
4.7 (4.12.1)	Screws not made of soft metal		P
	Screws of insulating material		N/A
	Torque test: torque (Nm); part :	Screw for fix LED PCB: 3.01mm, 0.5Nm	P
	Torque test: torque (Nm); part :		N/A
4.7 (4.12.2)	Screws with diameter < 3 mm screwed into metal		N/A
4.7 (4.12.4)	Locked connections:		N/A
	- fixed arms; torque (Nm) :		N/A
	- lampholder; torque (Nm)..... :		N/A
	- push-button switches; torque 0,8 Nm :		N/A
4.7 (4.12.5)	Screwed glands; force (Nm) :		N/A
4.7 (4.13)	Mechanical strength		P
4.7 (4.13.1)	Impact tests:		P
	- fragile parts; energy (Nm)..... :		N/A
	- other parts; energy (Nm)..... :	All parts, 0.5Nm	P
	1) live parts		P
	2) linings		N/A
	3) protection		P
	4) covers		P
4.7 (4.13.3)	Straight test finger	30N	P
4.7 (4.13.4)	Rough service luminaires		N/A
	- IP54 or higher		N/A
	a) fixed		N/A
	b) hand-held		N/A
	c) delivered with a stand		N/A
	d) for temporary installations and suitable for mounting on a stand		N/A
4.7 (4.13.6)	Tumbling barrel		N/A

EN 60598-2-4

Clause	Requirement + Test	Result - Remark	Verdict
4.7 (4.14)	Suspensions, fixings and means of adjusting		N/A
4.7(4.14.1)	Mechanical load:		N/A
	A) four times the weight		N/A
	B) torque 2,5 Nm		N/A
	C) bracket arm; bending moment (Nm) :		N/A
	D) load track-mounted luminaires		N/A
	E) clip-mounted luminaires, glass-shelve. Thickness (mm) :		—
	Metal rod. diameter (mm) :		N/A
	Fixed luminaire or independent control gear without fixing devices		N/A
4.7 (4.14.2)	Load to flexible cables		N/A
	Mass (kg) :		—
	Stress in conductors (N/mm ²) :		N/A
	Mass (kg) of semi-luminaire :		N/A
	Bending moment (Nm) of semi-luminaire :		N/A
4.7 (4.14.3)	Adjusting devices:		N/A
	- flexing test; number of cycles :		N/A
	- strands broken :		N/A
	- electric strength test afterwards		N/A
4.7 (4.14.4)	Telescopic tubes: cords not fixed to tube; no strain on conductors		N/A
4.7 (4.14.5)	Guide pulleys		N/A
4.7 (4.14.6)	Strain on socket-outlets		N/A
4.7 (4.15)	Flammable materials		P
	- glow-wire test 650°C :	See Test Table 4.15 (13.3.2)	P
	- spacing ≥30 mm		N/A
	- screen withstanding test of 13.3.1		N/A
	- screen dimensions		N/A
	- no fiercely burning material		P
	- thermal protection		N/A
	- electronic circuits exempted		N/A
4.7 (4.15.2)	Luminaires made of thermoplastic material with lamp control gear		N/A
	a) construction		N/A
	b) temperature sensing control		N/A
	c) surface temperature		N/A
4.7 (4.16)	Luminaires for mounting on normally flammable surfaces		P

EN 60598-2-4

Clause	Requirement + Test	Result - Remark	Verdict
	No lamp control gear..... :	(compliance with Section 12)	N/A
4.7 (4.16.1)	Lamp control gear spacing:		N/A
	- spacing 35 mm		N/A
	- spacing 10 mm		N/A
4.7 (4.16.2)	Thermal protection:		N/A
	- in lamp control gear		N/A
	- external		N/A
	- fixed position		N/A
	- temperature marked lamp control gear		N/A
4.7 (4.16.3)	Design to satisfy the test of 12.6..... :	(see clause 12.6)	N/A
4.7 (4.17)	Drain holes		N/A
	Clearance at least 5 mm		N/A
4.7 (4.18)	Resistance to corrosion		N/A
4.7 (4.18.1)	- rust-resistance		N/A
4.7 (4.18.2)	- season cracking in copper		N/A
4.7 (4.18.3)	- corrosion of aluminium		N/A
4.7 (4.19)	Igniters compatible with ballast		N/A
4.7 (4.20)	Rough service vibration		N/A
4.7 (4.21)	Protective shield		N/A
4.7 (4.21.1)	Shield fitted if tungsten halogen lamps or metal halide lamps		N/A
	Shield of glass if tungsten halogen lamps		N/A
4.7 (4.21.2)	Particles from a shattering lamp not impair safety		N/A
4.7 (4.21.3)	No direct path		N/A
4.7 (4.21.4)	Impact test on shield		N/A
	Glow-wire test on lamp compartment :	See Test Table 4.15 (13.3.2)	N/A
4.7 (4.22)	Attachments to lamps not cause overheating or damage		N/A
4.7 (4.23)	Semi-luminaires comply Class II		N/A
4.7 (4.24)	Photobiological hazards		P
4.7 (4.24.1)	No excessive UV radiation if tungsten halogen lamps and metal halide lamps (Annex P)		N/A
4.7 (4.24.2)	Retinal blue light hazard		P
	Class of risk group assessed according to IEC/TR 62778 :	RG0	—
	Luminaires with E_{thr} :		N/A
	a) Fixed luminaires		N/A

EN 60598-2-4

Clause	Requirement + Test	Result - Remark	Verdict
	- distance x m, borderline between RG1 and RG2.. :		N/A
	- marking and instruction according 3.2.23		N/A
	b) Portable and handheld luminaires		P
	- marking according 3.2.23 if RG1 exceeded at 200 mm according to IEC/TR 62778		N/A
	Portable luminaires for children IEC 60598-2-10 and Mains socket outlet nightlights IEC 60598-2-12 not exceed RG1 at 200 mm according to IEC/62778		N/A
4.7 (4.25)	Mechanical hazard		P
	No sharp point or edges		P
4.7 (4.26)	Short-circuit protection		N/A
4.7 (4.26.1)	Adequate means of uninsulated accessible SELV parts		N/A
4.7 (4.26.2)	Short-circuit test with test chain according 4.26.3		N/A
	Test chain not melt through		N/A
	Test sample not exceed values of Table 12.1 and 12.2		N/A
4.7 (4.27)	Terminal blocks with integrated screwless earthing contacts		N/A
	Test according Annex V		N/A
	Pull test of terminal fixing (20 N)		N/A
	After test, resistance < 0,05 Ω		N/A
	Pull test of mechanical connection (50 N)		N/A
	After test, resistance < 0,05 Ω		N/A
	Voltage drop test, resistance < 0,05 Ω		N/A
4.7 (4.28)	Fixing of thermal sensing control		N/A
	Not plug-in or easily replaceable type		N/A
	Reliably kept in position		N/A
	No adhesive fixing if UV radiations from a lamp can degrade the fixing		N/A
	Not outside the luminaire enclosure		N/A
	Test of adhesive fixing:		N/A
	Max. temperature on adhesive material (°C) :		—
	100 cycles between t min and t max		N/A
	Temperature sensing control still in position		N/A
4.7 (4.29)	Luminaires with non-replaceable light source		N/A
	Not possible to replace light source		N/A
	Live part not accessible after parts have been opened by hand or tools		N/A

EN 60598-2-4

Clause	Requirement + Test	Result - Remark	Verdict
4.7 (4.30)	Luminaires with non-user replaceable light source		P
	If protective cover provide protection against electric shock and marked with “caution, electric shock risk” symbol:		N/A
	Minimum two fixing means		N/A
4.7 (4.31)	Insulation between circuits		P
	Circuits insulated from LV supply fulfil requirements according 4.31.1 – 4.31.3		N/A
	Controllable luminaires requiring same level of insulation for all components, the insulation between control terminals and LV supply fulfil requirements according 4.31.1 – 4.31.3		N/A
4.7 (4.31.1)	SELV circuits		P
	Used SELV source		P
	Voltage ≤ ELV		P
	Insulating of SELV circuits from LV supply		P
	Insulating of SELV circuits from other non SELV circuits		N/A
	Insulating of SELV circuits from FELV		N/A
	Insulating of SELV circuits from other SELV circuits		N/A
	SELV circuits insulated from accessible parts according Table X.1		P
	Plugs not able to enter socket-outlets of other voltage systems		N/A
	Socket outlets does not admit plugs of other voltage systems		N/A
	Plugs and socket-outlets does not have protective conductor contact		N/A
4.7 (4.31.2)	FELV circuits		N/A
	Used FELV source		N/A
	Voltage ≤ ELV		N/A
	Insulating of FELV circuits from LV supply		N/A
	FELV circuits insulated from accessible parts according Table X.1		N/A
	Plugs not able to enter socket-outlets of other voltage systems		N/A
	Socket outlets does not admit plugs of other voltage systems		N/A
	Socket-outlets does not have protective conductor contact		N/A
4.7 (4.31.3)	Other circuits		N/A

EN 60598-2-4

Clause	Requirement + Test	Result - Remark	Verdict
	Other circuits insulated from accessible parts according Table X.1		N/A
	Class II construction with equipotential bonding for protection against indirect contacts with live parts:		N/A
	- conductive parts are connected together		N/A
	- test according 7.2.3		N/A
	- conductive part not cause an electric shock in case of an insulation fault		N/A
	- equipotential bonding in master/slave applications		N/A
	- master luminaire provided with terminal for accessible conductive parts of slave luminaires		N/A
	- slave luminaire constructed as class I		N/A
4.7 (4.32)	Overvoltage protective devices		N/A
	Comply with IEC 61643-11		N/A
	External to controlgear and connected to earth:		N/A
	- only in fixed luminaires		N/A
	- only connected to protective earth		N/A
4.7.1 (-)	Insulation not damaged when moving, adjusting or placing on support		P
4.7.2 (-)	Wiring fixed, to avoid rubbing		P
	Carrier or clips of insulation material or with insulating lining		N/A
4.7.3 (-)	Luminaire not overturn at angle 6°		P
	Outdoor use luminaire not overturn at an angle 15°		N/A
4.7.4 (-)	Candlestick luminaires with E5 or E10 lampholders provided with a switch		N/A
	Switch part of the luminaire or within 300 mm of the luminaire if with cord		N/A
4.7.5 (-)	Voltage not exceeding 25 V for E5 lampholders		N/A
	E10 lampholder voltage:		N/A
	- not exceeding 60 V for series connection) or		N/A
	- not exceeding 250 V for parallel connections		N/A
	Maximum rated wattage not exceed 100 W		N/A
4.7.6 (-)	Portable luminaires for outdoor use tails not provided		N/A
4.7.7 (-)	Portable luminaires for outdoor use, cable entries		N/A
4.7.8 (-)	Portable luminaires for outdoor use, socket-outlet degree of protection at least same as the luminaire but not less than IPX4.		N/A
	Degree of protection maintained with or without a plug inserted into the socket-outlet.		N/A

EN 60598-2-4

Clause	Requirement + Test	Result - Remark	Verdict
	Class II luminaires, mains socket-outlets comply with the standard and only allow connection to Class II luminaires		N/A
	Class I luminaires, mains socket-outlets comply with the standard and only allow connection to Class I or Class II luminaires		N/A
4.7.9 (-)	Portable luminaires for outdoor use, lampholders and plugs are of material resistant to tracking		N/A
	Compliance to clause 13.4		N/A
4.8 (11)	CREEPAGE DISTANCES AND CLEARANCES		P
	Impulse withstand category (Normal category II) (Category III Annex U, Table U.1)	Category II <input checked="" type="checkbox"/> Category III <input type="checkbox"/>	—
4.8 (11.2.1)	Category III according Annex U		N/A
	Protected against pollution, reduced creepage and clearance according Annex P of IEC 61347-1		N/A
4.7 (11.2.2)	Creepage distances for frequency up to 30 kHz..... :	See Test Table 4.7 (11.2) I	P
	Creepage distances for frequency over 30 kHz:		N/A
	- Controlgear marked with \hat{U}_{OUT} and f_{UOUT} according IEC 61347-1, clause 7.1, item w)	See Test Table 4.7 (11.2) II	N/A
	- Requirements according IEC 60664-4 for controlgear not covered by IEC 61347	See Test Table 4.7 (11.2) II	N/A
4.7 (11.2.3)	Clearances for frequency up to 30 kHz	See Test Table 4.7 (11.2) I	P
	Clearances distances for frequency over 30 kHz:		N/A
	- Controlgear marked with U_P	See Test Table 4.7 (11.2) II	N/A
	- Requirements according IEC 60664-4 for controlgear not covered by IEC 61347	See Test Table 4.7 (11.2) II	N/A
4.9 (7)	PROVISION FOR EARTHING		N/A
4.9 (7.2.1 + 7.2.3)	Accessible metal parts		N/A
	Metal parts in contact with supporting surface		N/A
	Resistance < 0,5 Ω		N/A
	Self-tapping screws used		N/A
	Thread-forming screws		N/A
	Thread-forming screw used in a groove		N/A
	Earth makes contact first		N/A
	Terminal blocks with integrated screwless earthing contacts tested according Annex V		N/A
	Protective earthing of the luminaire not via built-in control gear		N/A

EN 60598-2-4

Clause	Requirement + Test	Result - Remark	Verdict
4.8 (7.2.2 + 7.2.3)	Earth continuity in joints, etc.		N/A
4.9 (7.2.4)	Locking of clamping means		N/A
	Compliance with 4.7.3		N/A
	Terminal blocks with integrated screwless earthing contacts tested according Annex V		N/A
4.9 (7.2.5)	Earth terminal integral part of connector socket		N/A
4.9 (7.2.6)	Earth terminal adjacent to mains terminals		N/A
4.9 (7.2.7)	Electrolytic corrosion of the earth terminal		N/A
4.9 (7.2.8)	Material of earth terminal		N/A
	Contact surface bare metal		N/A
4.9 (7.2.10)	Class II luminaire for looping-in		N/A
	Double or reinforced insulation to functional earth		N/A
4.9 (7.2.11)	Earthing core coloured green-yellow		N/A
	Length of earth conductor		N/A
4.10 (14)	SCREW TERMINALS		N/A
	Separately approved; component list	(see Annex 1)	N/A
	Part of the luminaire	(see Annex 3)	N/A
4.10 (15)	SCREWLESS TERMINALS AND ELECTRICAL CONNECTIONS		N/A
	Separately approved; component list	(see Annex 1)	N/A
	Part of the luminaire	(see Annex 4)	N/A
4.11 (5)	EXTERNAL AND INTERNAL WIRING		P
4.11 (5.2)	Supply connection and external wiring		P
4.11 (5.2.1)	Means of connection	Supply cord with USB	P
	Outdoor luminaire has not PVC insulated external wiring if not class III or SELV ≤ 25 V a.c./60 V d.c. or protected from outdoor environment		N/A
4.11 (5.2.2)	Type of cable	(see Annex 1)	P
	Nominal cross-sectional area (mm ²)	(see Annex 1)	P
	Cables equal to IEC 60227 or IEC 60245		N/A
4.11 (5.2.3)	Type of attachment, X, Y or Z	Type Y	P
4.11 (5.2.5)	Type Z not connected to screws		N/A
4.11 (5.2.6)	Cable entries:		P
	- suitable for introduction		P
	- adequate degree of protection		P
4.11 (5.2.7)	Cable entries through rigid material have rounded edges		N/A
4.11 (5.2.8)	Insulating bushings:		N/A

EN 60598-2-4

Clause	Requirement + Test	Result - Remark	Verdict
	- suitably fixed		N/A
	- material in bushings		N/A
	- material not likely to deteriorate		N/A
	- tubes or guards made of insulating material		N/A
4.11 (5.2.9)	Locking of screwed bushings		N/A
4.11 (5.2.10)	Cord anchorage:		N/A
	- covering protected from abrasion		N/A
	- clear how to be effective		N/A
	- no mechanical or thermal stress		N/A
	- no tying of cables into knots etc.		N/A
	- insulating material or lining		N/A
4.11 (5.2.10.1)	Cord anchorage for type X attachment:		N/A
	a) at least one part fixed		N/A
	b) types of cable		N/A
	c) no damaging of the cable		N/A
	d) whole cable can be mounted		N/A
	e) no touching of clamping screws		N/A
	f) metal screw not directly on cable		N/A
	g) replacement without special tool		N/A
	Glands not used as anchorage		N/A
	Labyrinth type anchorages		N/A
4.11 (5.2.10.2)	Adequate cord anchorage for type Y and type Z attachment		N/A
4.11 (5.2.10.3)	Tests:		N/A
	- impossible to push cable; unsafe		N/A
	- pull test: 25 times; pull (N) :		N/A
	- torque test: torque (Nm)..... :		N/A
	- displacement \leq 2 mm		N/A
	- no movement of conductors		N/A
	- no damage of cable or cord		N/A
	- function independent of electrical connection		N/A
4.11 (5.2.11)	External wiring passing into luminaire		N/A
4.11 (5.2.12)	Looping-in terminals		N/A

EN 60598-2-4

Clause	Requirement + Test	Result - Remark	Verdict
4.11 (5.2.13)	Wire ends not tinned		N/A
	Wire ends tinned: no cold flow		N/A
4.11 (5.2.14)	Mains plug same protection		N/A
	Class III luminaire plug		N/A
	No unsafe compatibility		N/A
4.11 (5.2.16)	Appliance inlets (IEC 60320)		N/A
	Installation couplers (IEC 61535)		N/A
	Other appliance inlet or connector according relevant IEC standard		N/A
4.11 (5.2.17)	No standardized interconnecting cables properly assembled		N/A
4.11 (5.2.18)	Used plug in accordance with		P
	- IEC 60083		N/A
	- other standard		P
4.11 (5.3)	Internal wiring		P
4.11 (5.3.1)	Internal wiring of suitable size and type		P
	Through wiring		N/A
	- not delivered/ mounting instruction		N/A
	- factory assembled		N/A
	- socket outlet loaded (A) :		N/A
	- temperatures..... :	(see Annex 2)	N/A
	Green-yellow for earth only		N/A
4.11 (5.3.1.1)	Internal wiring connected directly to fixed wiring		N/A
	Cross-sectional area (mm ²) :		N/A
	Insulation thickness		N/A
	Extra insulation added where necessary		N/A
4.11 (5.3.1.2)	Internal wiring connected to fixed wiring via internal current-limiting device		N/A
	Cross-sectional area (mm ²) :	(see Annex 1)	N/A
4.11 (5.3.1.3)	Double or reinforced insulation for class II		N/A
4.11 (5.3.1.4)	Conductors without insulation		N/A
4.11 (5.3.1.5)	SELV current-carrying parts		P

EN 60598-2-4

Clause	Requirement + Test	Result - Remark	Verdict
4.11 (5.3.1.6)	Insulation thickness other than PVC or rubber		N/A
4.11 (5.3.2)	Sharp edges etc.		P
	No moving parts of switches etc.		P
	Joints, raising/lowering devices		N/A
	Telescopic tubes etc.		N/A
	No twisting over 360°		P
4.11 (5.3.3)	Insulating bushings:		N/A
	- suitable fixed		N/A
	- material in bushings		N/A
	- material not likely to deteriorate		N/A
	- cables with protective sheath		N/A
4.11 (5.3.4)	Joints and junctions effectively insulated		N/A
4.11 (5.3.5)	Strain on internal wiring		N/A
4.11 (5.3.6)	Wire carriers		N/A
4.11 (5.3.7)	Wire ends not tinned		N/A
	Wire ends tinned: no cold flow		P
4.11 (5.4)	Test to determine suitability of conductors having a reduced cross-sectional area		N/A
	Under test the temperature of the luminaire wiring insulation not exceed the limits stated in Table 12.2	(see Annex 2)	N/A
	No damage to luminaire wiring after test		N/A
4.11.1 (-)	Indoor use luminaire The requirement of one part of cord anchorage to be fixed to the luminaire not applied for table lamps of glass or ceramic		—
4.11.2 (-)	Class I and class II indoor use Luminaire with a mass less than 1 kg the current $\leq 2,5$ A and cable ≤ 2 m and conductor $\geq 0,5$ mm ²		N/A
4.11.3 (-)	Terminals, a cord anchorage and an inlet opening for the proper connection of the flexible cable or cord if for outdoor use and delivered without a flexible cable or cord and a plug.		N/A
4.11.4 (-)	Portable luminaires for outdoor use Insulation class I and class II, non-detachable flexible cables or cords at least type 245 IEC 57.		N/A
4.12 (8)	PROTECTION AGAINST ELECTRIC SHOCK		P
4.12 (8.2.1)	Live parts not accessible		P
	Basic insulated parts not used on the outer surface without appropriate protection		P

EN 60598-2-4

Clause	Requirement + Test	Result - Remark	Verdict
	Basic insulated parts not accessible with standard test finger on portable, settable and adjustable luminaires		N/A
	Basic insulated parts not accessible with Ø 50 mm probe from outside, other types of luminaires		N/A
	Lamp and starter holders in portable and adjustable luminaires comply with double or reinforced insulation requirements		N/A
	Basic insulation only accessible under lamp or starter replacement		P
	Protection in any position		P
	Double-ended tungsten filament lamp		N/A
	Insulation lacquer not reliable		N/A
	Double-ended high pressure discharge lamp		N/A
	Relevant warning according to 3.2.18 fitted to the luminaire		N/A
4.12 (8.2.2)	Portable luminaire adjusted in most unfavourable position		P
4.12 (8.2.3.a)	Class II luminaire:		N/A
	- basic insulated metal parts not accessible during starter or lamp replacement		N/A
	- basic insulation not accessible other than during starter or lamp replacement		N/A
	- glass protective shields not used as supplementary insulation		N/A
4.12 (8.2.3.b)	BC lampholder of metal in class I luminaires is earthed		N/A
4.12 (8.2.3.c)	SELV circuits with exposed current carrying parts:		N/A
	Ordinary luminaire:		N/A
	- voltage under load (V)		N/A
	- no-load voltage (V)		N/A
	- touch current if applicable (mA)		N/A
	One conductive part insulated if required		N/A
	Other than ordinary luminaire:		N/A
	- nominal voltage (V)		N/A
	Class III luminaire only for connection to SELV		N/A
	Class III luminaire not provided with means for protective earthing		N/A
4.12 (8.2.4)	Portable luminaire have protection independent of supporting surface		P

EN 60598-2-4

Clause	Requirement + Test	Result - Remark	Verdict
4.12 (8.2.5)	Compliance with the standard test finger or relevant probe		P
4.12 (8.2.6)	Covers reliably secured		P
4.12 (8.2.7)	Luminaire other than below with capacitor > 0,5 μ F not exceed 50 V 1 min after disconnection		N/A
	Portable luminaire with capacitor > 0,1 μ F (0.25) not exceed 34 V 1 s after disconnection		N/A
	Other luminaires with capacitor > 0,1 μ F (0.25) with plug and track adaptors not exceed 60 V 5 s after disconnection		N/A
4.12. (-)	Class I luminaire with bayonet lampholder:		N/A
	1) cap not accessible with test finger		N/A
	2) metal lampholder is earthed		N/A

4.13 (12)	ENDURANCE TEST AND THERMAL TEST		P
4.13 (-)	If IP > IP 20 relevant test of (12.4), (12.5), (12.6) and (12.7) after (9.2) before (9.3) specified in 4.13		—
4.13 (12.2)	Selection of lamps and ballasts		—
	Lamp used according Annex B..... :	See Annex 2 for lamp used	—
	Controlgear if separate and not supplied..... :	See Annex 2 for controlgear used	—
4.13 (12.3)	Endurance test:		P
	a) mounting-position	As normal use	—
	b) test temperature ($^{\circ}$ C)	35	—
	c) total duration (h)	240	—
	d) supply voltage (V)	DC 26.4V	—
	d) if not equipped with controlgear, constant voltage/current (V) or (A)	--	—
	e) luminaire ceases to operate		—
4.13 (12.3.2)	After endurance test:		P
	- no part unserviceable		P
	- luminaire not unsafe		P
	- no damage to track system		N/A
	- marking legible		P
	- no cracks, deformation etc.		P
4.13 (12.4)	Thermal test (normal operation)..... :	(see Annex 2)	P
4.13 (12.5)	Thermal test (abnormal operation)	(see Annex 2)	N/A
4.13 (12.6)	Thermal test (failed lamp control gear condition):		N/A

EN 60598-2-4

Clause	Requirement + Test	Result - Remark	Verdict
4.13 (12.6.1)	Through wiring or looping-in wiring loaded by a current of (A)		—
	- case of abnormal conditions		—
	- electronic lamp control gear		N/A
	- measured winding temperature (°C): at 1,1 Un		—
	- measured mounting surface temperature (°C) at 1,1 Un.....		N/A
	- calculated mounting surface temperature (°C)		N/A
	- track-mounted luminaires		N/A
4.13 (12.6.2)	Temperature sensing control		N/A
	- case of abnormal conditions		—
	- thermal link		N/A
	- manual reset cut-out		N/A
	- auto reset cut-out		N/A
	- measured mounting surface temperature (°C)		N/A
	- track-mounted luminaires		N/A
4.13 (12.7)	Thermal test (failed lamp control gear in plastic luminaires):		N/A
4.13 (12.7.1)	Luminaire without temperature sensing control		N/A
4.13 (12.7.1.1)	Luminaire with fluorescent lamp ≤ 70W		N/A
	Test method 12.7.1.1 or Annex W		—
	Test according to 12.7.1.1:		N/A
	- case of abnormal conditions		—
	- Ballast failure at supply voltage (V)		—
	- Components retained in place after the test		N/A
	- Test with standard test finger after the test		N/A
	Test according to Annex W:		N/A
	- case of abnormal conditions		—
	- measured winding temperature (°C): at 1,1 Un.....		—
	- measured temperature of fixing point/exposed part (°C): at 1,1 Un		—
	- calculated temperature of fixing point/exposed part (°C).....		—
	Ball-pressure test	See Table 4.15 (13.2.1)	N/A
4.13 (12.7.1.2)	Luminaire with discharge lamp, fluorescent lamp > 70W, transformer > 10 VA		N/A

EN 60598-2-4

Clause	Requirement + Test	Result - Remark	Verdict
	- case of abnormal conditions		—
	- measured winding temperature (°C): at 1,1 Un..... :		—
	- measured temperature of fixing point/exposed part (°C): at 1,1 Un		—
	- calculated temperature of fixing point/exposed part (°C)..... :		—
	Ball-pressure test	See Table 4.15 (13.2.1)	N/A
4.13 (12.7.1.3)	Luminaire with short circuit proof transformers ≤ 10 VA		N/A
	- case of abnormal conditions		—
	- Components retained in place after the test		N/A
	- Test with standard test finger after the test		N/A
4.13 (12.7.2)	Luminaire with temperature sensing control		N/A
	- thermal link..... :	Yes <input type="checkbox"/> No <input type="checkbox"/>	—
	- manual reset cut-out	Yes <input type="checkbox"/> No <input type="checkbox"/>	—
	- auto reset cut-out	Yes <input type="checkbox"/> No <input type="checkbox"/>	—
	- case of abnormal conditions		—
	- highest measured temperature of fixing point/exposed part (°C):..... :		—
	Ball-pressure test:	See Table 4.15 (13.2.1)	N/A
4.13 (-)	Indoor use luminaire, Test overturned position (overturns < 15°)	(see Annex 2)	N/A
4.14 (9)	RESISTANCE TO DUST AND MOISTURE		P
4.14 (-)	If IP > IP 20 the order of tests as specified in clause 4.12		N/A
4.14 (9.2)	Tests for ingress of dust, solid objects and moisture:		P
	- classification according to IP	IP20	—
	- mounting position during test..... :	As normal use	—
	- fixing screws tightened; torque (Nm)	--	—
	- tests according to clauses	Clause 9.2.0	—
	- electric strength test afterwards		P
	a) no deposit in dust-proof luminaire		N/A
	b) no talcum in dust-tight luminaire		N/A
	c) no trace of water on current-carrying parts or on insulation where it could become a hazard		N/A
	c.1) For luminaires without drain holes – no water entry		N/A

EN 60598-2-4

Clause	Requirement + Test	Result - Remark	Verdict
	c.2) For luminaires with drain holes – no hazardous water entry		N/A
	d) no water in watertight or pressure watertight luminaire		N/A
	e) no contact with live parts (IP 2X)		P
	e) no entry into enclosure (IP 3X and IP 4X)		N/A
	e) no contact with live parts through drain holes and ventilation slots (IP3X and IP4X)		N/A
	f) no trace of water on part of lamp requiring protection from splashing water		N/A
	g) no damage of protective shield or glass envelope		N/A
4.14 (9.3)	Humidity test 48 h	25°C, 93%RH	P
4-14 (-)	Portable luminaire for outdoor use tested in the most unfavourable of the overturned positions likely to occur		N/A
4.15 (10)	INSULATION RESISTANCE AND ELECTRIC STRENGTH		P
4.15 (10.2.1)	Insulation resistance test		P
	Cable or cord covered by metal foil or replaced by a metal rod of mm Ø		—
	Insulation resistance (MΩ)		—
	SELV		P
	- between current-carrying parts of different polarity :		N/A
	- between current-carrying parts and mounting surface	>100MΩ	P
	- between current-carrying parts and metal parts of the luminaire.....	>100MΩ	P
	- between the outer surface of a flexible cord or cable where it is clamped in a cord anchorage and accessible metal parts		N/A
	- Insulation bushings as described in Section 5		N/A
	Other than SELV		P
	- between live parts of different polarity	Approved LED driver	N/A
	- between live parts and mounting surface	>100MΩ	P
	- between live parts and metal parts	>100MΩ	P
	- between live parts of different polarity through action of a switch		N/A
	- between the outer surface of a flexible cord or cable where it is clamped in a cord anchorage and accessible metal parts		N/A
	- Insulation bushings as described in Section 5		N/A

EN 60598-2-4

Clause	Requirement + Test	Result - Remark	Verdict
4.15 (10.2.2)	Electric strength test		P
	Dummy lamp		N/A
	Luminaires with ignitors after 24 h test		N/A
	Luminaires with manual ignitors		N/A
	Test voltage (V)..... :		P
	SELV		P
	- between current-carrying parts of different polarity :		N/A
	- between current-carrying parts and mounting surface :	500V	P
	- between current-carrying parts and metal parts of the luminaire..... :	500V	P
	- between the outer surface of a flexible cord or cable where it is clamped in a cord anchorage and accessible metal parts :		N/A
	- Insulation bushings as described in Section 5 :		N/A
	Other than SELV		N/A
	- between live parts of different polarity :	Approved LED driver	N/A
	- between live parts and mounting surface :		N/A
	- between live parts and metal parts :		N/A
	- between live parts of different polarity through action of a switch :		N/A
	- between the outer surface of a flexible cord or cable where it is clamped in a cord anchorage and accessible metal parts :		N/A
	- Insulation bushings as described in Section 5 :		N/A
4.15 (10.3)	Touch current or protective conductor current (mA):.		N/A
4.16 (13)	RESISTANCE TO HEAT, FIRE AND TRACKING		P
4.16 (13.2.1)	Ball-pressure test :	See Test Table 4.15 (13.2.1)	P
4.16 (13.3.1)	Needle-flame test (10 s)..... :	See Test Table 4.15 (13.3.1)	P
4.16 (13.3.2)	Glow-wire test (650°C)..... :	See Test Table 4.15 (13.3.2)	P
4.16 (13.4)	Proof tracking test (IEC 60112)..... :	See Test Table 4.15 (13.4)	N/A

EN 60598-2-4

Clause	Requirement + Test				Result - Remark		Verdict
4.7 (11.2)	TABLE I: Creepage distances and clearances						N/A
	Minimum distances (mm) for a.c. up to 30 kHz sinusoidal voltages						N/A
	Applicable part of IEC 60598-1 Table 11.1A*, 11.1B* and 11.2*						N/A
	Insulation type **	Measured clearance	Required		Measured creepage	Required	
			clearance	*Table		creepage	*Table
Distance 1:	B	>1.95	1.5	11.1B*	>3.25	2.5	11.1A*
Working voltage (V).....:					--		—
PTI.....:					< 600 <input checked="" type="checkbox"/>	≥ 600 <input type="checkbox"/>	—
Pulse voltage if applicable (kV)					--		—
Supplementary information: between live parts of different polarity							
Distance 2:	B	>3.9	3.0	11.1B*	>6.5	5.0	11.1A*
Working voltage (V).....:					--		—
PTI.....:					< 600 <input checked="" type="checkbox"/>	≥ 600 <input type="checkbox"/>	—
Pulse voltage if applicable (kV)					--		—
Supplementary information: between live parts and metal parts							
Distance 3:	B	>3.9	3.0	11.1B*	>6.5	5.0	11.1A*
Working voltage (V).....:					--		—
PTI.....:					< 600 <input checked="" type="checkbox"/>	≥ 600 <input type="checkbox"/>	—
Pulse voltage if applicable (kV)					--		—
Supplementary information: between live parts and mounting surface							
** Insulation type: B – Basic; S – Supplementary; R – Reinforced. See also IEC 60598-1 Annex M.							

4.7 (11.2)	TABLE II: Creepage distances and clearances						N/A
	Minimum distances (mm) for a.c. higher than 30 kHz sinusoidal voltages						
	Applicable part of IEC 61347-1 Table 7 and 8* or IEC 60664-4 Table 1 and 2						
Distances	Insulation type **	Measured clearance	Required		Measured creepage	Required	
			clearance	*Table		creepage	*Table
Distance 1:							
Working voltage (V).....:							—
Frequency if applicable (kHz).....:							—
PTI.....:					< 600 <input type="checkbox"/>	≥ 600 <input type="checkbox"/>	—
Peak value of the working voltage \hat{U}_{out} if applicable (kV)							—
Supplementary information:							
Distance 2:							
Working voltage (V).....:							—
Frequency if applicable (kHz).....:							—

EN 60598-2-4

Clause	Requirement + Test	Result - Remark	Verdict
PTI.....:		< 600 <input type="checkbox"/> ≥ 600 <input type="checkbox"/>	—
Peak value of the working voltage \hat{U}_{out} if applicable (kV)			—
Supplementary information:			
Distance 3:			
Working voltage (V).....:			—
Frequency if applicable (kHz).....:			—
PTI.....:		< 600 <input type="checkbox"/> ≥ 600 <input type="checkbox"/>	—
Peak value of the working voltage \hat{U}_{out} if applicable (kV)			—
Supplementary information: ** Insulation type: B – Basic; S – Supplementary; R – Reinforced. See also IEC 60598-1 Annex M.			

4.15a (13.2.1)	TABLE: Ball Pressure Test of Thermoplastics			P
Allowed impression diameter (mm)	2mm			—
Object/ Part No./ Material	Manufacturer/ trademark	Test temperature (°C)	Impression diameter (mm)	
Plastic enclosure	See Annex 1	125	1.62	
Supplementary information:				

4.15b (13.3.1)	TABLE: Needle-flame test (IEC 60695-11-5)				P
Object/ Part No./ Material	Manufacturer/ trademark	Duration of application of test flame (ta); (s)	Ignition of specified layer Yes/No	Duration of burning (tb) (s)	Verdict
PCB	See Annex 1	10	No	0	P
Supplementary information:					

4.15c (13.3.2)	TABLE: Glow-wire test (IEC 60695-2-11)				P
Glow wire temperature	650°C				—
Object/ Part No./ Material	Manufacturer/ trademark	Ignition of specified layer Yes/No	Duration of burning (tb) (s)	Verdict	
LED cover	See Annex 1	No	0	P	
Plastic closure	See Annex 1	No	0	P	
Supplementary information:					

EN 60598-2-4					
Clause	Requirement + Test			Result - Remark	Verdict
4.15d (13.4)	TABLE: Proof tracking test (IEC 60112)				N/A
Test voltage PTI		175 V			—
Object/ Part No./ Material	Manufacturer/ trademark	Withstand 50 drops without failure on three places or on three specimens			Verdict
--	--	--	--	--	--
--	--	--	--	--	--
Supplementary information:					

EN 60598-2-4			
Clause	Requirement + Test	Result - Remark	Verdict

ANNEX 1	TABLE: Critical components information	P
----------------	---	---

Object / part No.	Code	Manufacturer/ trademark	Type / model	Technical data	Standard	Mark(s) of conformity ¹⁾
Internal wire	C	DONG GUAN SHENG PAI ELECTRIC WIRE & CABLE CO LTD	3239	24AWG,3000V,200C, VW-1 frame	EN 60598-1 EN 60598-2-4	UL E347603 Test with appliance
Plastic enclosure	C	CHI MEI CORPORATION	PA-757F(+)	ABS	EN 60598-1 EN 60598-2-4	UL E56070 Test with appliance
Lamp cover	C	GUANGSHUN PLASTIC CO.,LTD	A-1	Acrylic	EN 60598-1 EN 60598-2-4	Tested with appliance
LED PCB	C	KINGBOARD LAMINATES HOLDINGS LTD	KB-6150	V-0, 120 °C	EN 60598-1 EN 60598-2-4	UL E123995 Tested with appliance
LED	C	LUCKYSTAR ELECTRONIC TECHNOLOGY CO.,LTD.	KR2835WSC	VF: 2.9-3.8V, IF: 30mA	IEC TR 62778	Tested with appliance

Supplementary information:

The codes above have the following meaning:

- A - The component is replaceable with another one, also certified, with equivalent characteristics
- B - The component is replaceable if authorised by the test house
- C - Integrated component tested together with the appliance
- D - Alternative component

EN 60598-2-4

Clause	Requirement + Test	Result - Remark	Verdict
--------	--------------------	-----------------	---------

ANNEX 2	TABLE: Temperature measurements, thermal tests of Section 12		P
	Type reference	MY2278-10	—
	Lamp used	LED	—
	Lamp control gear used	--	—
	Mounting position of luminaire	As normal use	—
	Supply wattage (W).....	36W	—
	Supply current (A)	1.5A	—
	Calculated power factor	--	—
	Temperatures in test 1 - 4 below are corrected for ta (°C)	25.0	—
	- abnormal operating mode	--	—
4.12 (12.4)	- test 1: rated voltage	--	—
	- test 2: 1,06 times rated voltage or 1,05 times rated wattage.....	DC 25.44V	—
	- test 3: Load on wiring to socket-outlet, 1,06 times voltage or 1,05 times wattage	--	—
	Through wiring or looping-in wiring loaded by a current of A during the test	--	—
4.12 (12.5)	Through wiring or looping-in wiring loaded by a current of A during the test	--	—

Temperature measurements, (°C)

Part	Ambient	Clause 12.4 – normal				Clause 12.5 – abnormal	
		test 1	test 2	test 3	limit	test 4	limit
			DC 5.3V				
External wire	25	--	26.9	--	90	--	--
LED PCB	25	--	39.2	--	Ref.	--	--
LED cover	25	--	28.9	--	Ref.	--	--
Plastic enclosure	25	--	27.3	--	Ref.	--	--
Lighting surface (0.1m)	25	--	29.1	--	90	--	--

Supplementary information:

EN 60598-2-4

Clause	Requirement + Test	Result - Remark	Verdict
--------	--------------------	-----------------	---------

ANNEX 3	Screw terminals (part of the luminaire)		N/A
(14)	SCREW TERMINALS		N/A
(14.2)	Type of terminal		—
	Rated current (A)		—
(14.3.2.1)	One or more conductors		N/A
(14.3.2.2)	Special preparation		N/A
(14.3.2.3)	Terminal size		N/A
	Cross-sectional area (mm ²)		—
(14.3.3)	Conductor space (mm)		N/A
(14.4)	Mechanical tests		N/A
(14.4.1)	Minimum distance		N/A
(14.4.2)	Cannot slip out		N/A
(14.4.3)	Special preparation		N/A
(14.4.4)	Nominal diameter of thread (metric ISO thread).....	M	N/A
	External wiring		N/A
	No soft metal		N/A
(14.4.5)	Corrosion		N/A
(14.4.6)	Nominal diameter of thread (mm)		N/A
	Torque (Nm).....		N/A
(14.4.7)	Between metal surfaces		N/A
	Lug terminal		N/A
	Mantle terminal		N/A
	Pull test; pull (N).....		N/A
(14.4.8)	Without undue damage		N/A

EN 60598-2-4

Clause	Requirement + Test	Result - Remark	Verdict
ANNEX 4	Screwless terminals (part of the luminaire)		N/A
(15)	SCREWLESS TERMINALS		N/A
(15.2)	Type of terminal :		—
	Rated current (A) :		—
(15.3.1)	Material		N/A
(15.3.2)	Clamping		N/A
(15.3.3)	Stop		N/A
(15.3.4)	Unprepared conductors		N/A
(15.3.5)	Pressure on insulating material		N/A
(15.3.6)	Clear connection method		N/A
(15.3.7)	Clamping independently		N/A
(15.3.8)	Fixed in position		N/A
(15.3.10)	Conductor size		N/A
	Type of conductor		N/A
(15.5)	Terminals and connections for internal wiring		N/A
(15.5.1)	Mechanical tests		N/A
(15.5.1.1.1)	Pull test spring-type terminals (4 N, 4 samples) :		N/A
(15.5.1.1.2)	Pull test pin or tab terminals (4 N, 4 samples) :		N/A
	Insertion force not exceeding 50 N		N/A
(15.5.1.2)	Permanent connections: pull-off test (20 N)		N/A
(15.5.2)	Electrical tests		N/A
	Voltage drop (mV) after 1 h (4 samples)..... :		N/A
	Voltage drop of two inseparable joints		N/A
	Number of cycles:		—
	Voltage drop (mV) after 10th alt. 25th cycle (4 samples) :		N/A
	Voltage drop (mV) after 50th alt. 100th cycle (4 samples) :		N/A
	After ageing, voltage drop (mV) after 10th alt. 25th cycle (4 samples)..... :		N/A
	After ageing, voltage drop (mV) after 50th alt. 100th cycle (4 samples) :		N/A
(15.6)	Terminals and connections for external wiring		N/A
(15.6.1)	Conductors		N/A
	Terminal size and rating		N/A
15.6.2	Mechanical tests		N/A

EN 60598-2-4

Clause	Requirement + Test	Result - Remark	Verdict
(15.6.2.1)	Pull test spring-type terminals or welded connections (4 samples); pull (N)		N/A
(15.6.2.2)	Pull test pin or tab terminals (4 samples); pull (N)		N/A
(15.6.3)	Electrical tests		N/A
	Tests according 15.6.3.1 + 15.6.3.2 in IEC 60598-1		N/A

(15.6.3.1) (15.6.3.2)		TABLE: Contact resistance test / Heating tests										Verdict
		Voltage drop (mV) after 1 h										—
terminal		1	2	3	4	5	6	7	8	9	10	
voltage drop (mV)												
		Voltage drop of two inseparable joints										
		Voltage drop after 10th alt. 25th cycle										
		Max. allowed voltage drop (mV).....:										—
terminal		1	2	3	4	5	6	7	8	9	10	
voltage drop (mV)												
		Voltage drop after 50th alt. 100th cycle										
		Max. allowed voltage drop (mV).....:										—
terminal		1	2	3	4	5	6	7	8	9	10	
voltage drop (mV)												
		Continued ageing: voltage drop after 10th alt. 25th cycle										
		Max. allowed voltage drop (mV).....:										—
terminal		1	2	3	4	5	6	7	8	9	10	
voltage drop (mV)												
		Continued ageing: voltage drop after 50th alt. 100th cycle										
		Max. allowed voltage drop (mV).....:										—
terminal		1	2	3	4	5	6	7	8	9	10	
voltage drop (mV)												
Supplementary information:												

EUROPEAN GROUP DIFFERENCES			
Clause	Requirement + Test	Result - Remark	Verdict

ATTACHMENT TO TEST REPORT IEC 60598-2-4 EUROPEAN GROUP DIFFERENCES AND NATIONAL DIFFERENCES Luminaires Part 2: Particular requirements Section 4: Portable general purpose luminaires			
Differences according to.....:	EN 60598-2-4:2018 used in conjunction with EN 60598-1:2015 + A1:2018		
Annex Form No.....:	EU_GD_IEC60598_2_4G		
Annex Form Originator	AST		
Master Annex Form.....:	2018-07-10		
Copyright © 2018 IEC System for Conformity Testing and Certification of Electrical Equipment (IECEE), Geneva, Switzerland. All rights reserved.			
	CENELEC COMMON MODIFICATIONS (EN)		P
4.5 (3)	MARKING		P
4.5 (3.3.101)	For luminaires not supplied with terminal block: Adequate warning on the package		N/A
4.6 (4)	CONSTRUCTION		P
4.6 (4.11.6)	Electro-mechanical contact systems		P
4.10 (5)	EXTERNAL AND INTERNAL WIRING		P
4.10 (5.2.1)	Connecting leads		N/A
	- without a means for connection to the supply		N/A
	- terminal block specified		N/A
	- relevant information provided		N/A
	- compliance with 4.6, 4.7.1, 4.7.2, 4.10.1, 11.2, 12 and 13.2 of Part 1		N/A
4.10 (5.2.2)	Cables equal to EN 50525		N/A
	Replace table 5.1 – Supply cord		N/A
4.12 (12)	ENDURANCE TESTS AND THERMAL TESTS		P
4.12 (12.4.2c)	Thermal test (normal operation) see footnote c to table 12.2 relating to unsleeved fixed wiring		P

EUROPEAN GROUP DIFFERENCES			
Clause	Requirement + Test	Result - Remark	Verdict
ZB	ANNEX ZB, SPECIAL NATIONAL CONDITIONS (EN)		P
(3.3)	DK: power supply cords of class I luminaires with label		N/A
(4.5.1)	DK: socket-outlets		N/A
(5.2.1)	CY, DK, FI, GB: type of plug		P
ZC	ANNEX ZC, NATIONAL DEVIATIONS (EN)		P
(4 & 5)	FR: Shuttered socket-outlets 10/16A		N/A
	FR: Safety requirements for high buildings (Arrêté du 30 décembre 2011 portant règlement de sécurité pour la construction des immeubles de grande hauteur et leur protection contre les risques d'incendie et de panique; Section VIII; Article GH 48, Eclairage) Glow-wire test for outer parts of luminaires:		N/A
	- 850°C for luminaires in stairways and horizontal travel paths		N/A
	- 650°C for indoor luminaires		N/A
(13.3)	GB: Requirements according to United Kingdom Building Regulation		P

EN 62031			
Clause	Requirement + Test	Result - Remark	Verdict
4	GENERAL REQUIREMENTS		P
4.4	Integral modules tested assembled in the luminaire		N/A
4.5	Independent modules complies with requirements in IEC 60598-1		N/A
6	CLASSIFICATION		P
	Built-in module	Yes <input checked="" type="checkbox"/> No <input type="checkbox"/>	—
	Independent module	Yes <input type="checkbox"/> No <input checked="" type="checkbox"/>	—
	Integral module	Yes <input type="checkbox"/> No <input checked="" type="checkbox"/>	—
	For Integral module; Note to 1.2.1 in IEC 60598-1 applies.		—
13 (14)	FAULT CONDITIONS		P
- (14)	When operated under fault conditions the controlgear:		P
	- does not emit flames or molten material		P
	- does not produce flammable gases		P
	- protection against accidental contact not impaired		P
	Thermally protected controlgear does not exceed the marked temperature value		N/A
	Fault conditions: capacitors, resistors or inductors without proof of compliance with relevant specifications have been short-circuited or disconnected	(see appended table)	N/A
- (14.1)	Short-circuit of creepage distances and clearances if less than specified in clause 16 in Part 1 (except between live parts and accessible metal parts)	(see appended table)	N/A
	Creepage distances on printed boards less than specified in clause 16 in Part 1 provided with coating according to IEC 60664-3		N/A
- (14.2)	Short-circuit or interruption of semiconductor devices	(see appended table)	N/A
- (14.3)	Short-circuit across insulation consisting of lacquer, enamel or textile	(see appended table)	N/A
- (14.4)	Short-circuit across electrolytic capacitors	(see appended table)	N/A
- (14.5)	After the tests has been carried out on three samples:		P
	The insulation resistance 1 M	>100MΩ	P
	No flammable gases		P
	No accessible parts have become live		P
	During the tests, a five-layer tissue paper, where the test specimen is wrapped, does not ignite		P

EN 62031			
Clause	Requirement + Test	Result - Remark	Verdict
- (14.6)	Relevant fault condition tests with high-power supply		—
13.2	Module withstands overpower condition >15 min.		P
	Module with automatic protective device or power limiter, test performed 15 min. at limit.		N/A
	During the tests, tissue paper, spread below module, does not ignite		P
15	CONSTRUCTION		P
	Wood, cotton, silk, paper and similar fibrous material not used as insulation		P

IEC TR 62778			
Clause	Requirement + Test	Result - Remark	Verdict

TABLE: Spectroradiometric measurement			P
	Measurement performed on:	<input type="checkbox"/> LED package <input type="checkbox"/> LED module <input type="checkbox"/> Lamp <input checked="" type="checkbox"/> Luminaire	
	Model number	MY2278-10	—
	Test voltage (V)	DC 24V	—
	Test current (mA)	--	—
	Test frequency (Hz)	--	—
	Ambient, t (°C)	25	—
	Measurement distance	<input checked="" type="checkbox"/> 20 cm <input type="checkbox"/> ... cm	—
	Source size	<input checked="" type="checkbox"/> Non-small <input type="checkbox"/> Small : mm	—
	Field of view	<input type="checkbox"/> 100 mrad <input checked="" type="checkbox"/> 11 mrad <input type="checkbox"/> 1,7 mrad (for small sources)	—

Item	Symbol	Units	Result	Remark
Correlated colour temperature	CCT	K	-	
x/y colour coordinates			/	
Blue light hazard radiance	L _B	W/(m ² •sr ¹)	1.233e+002	
Blue light hazard irradiance	E _B	W/m ²	/	
Luminance	L	cd/m ²	1.342e+005	
Illuminance	E	lx	786	
Supplementary information: RG0				

PRODUCT PICTURE



Fig.1 Overall view

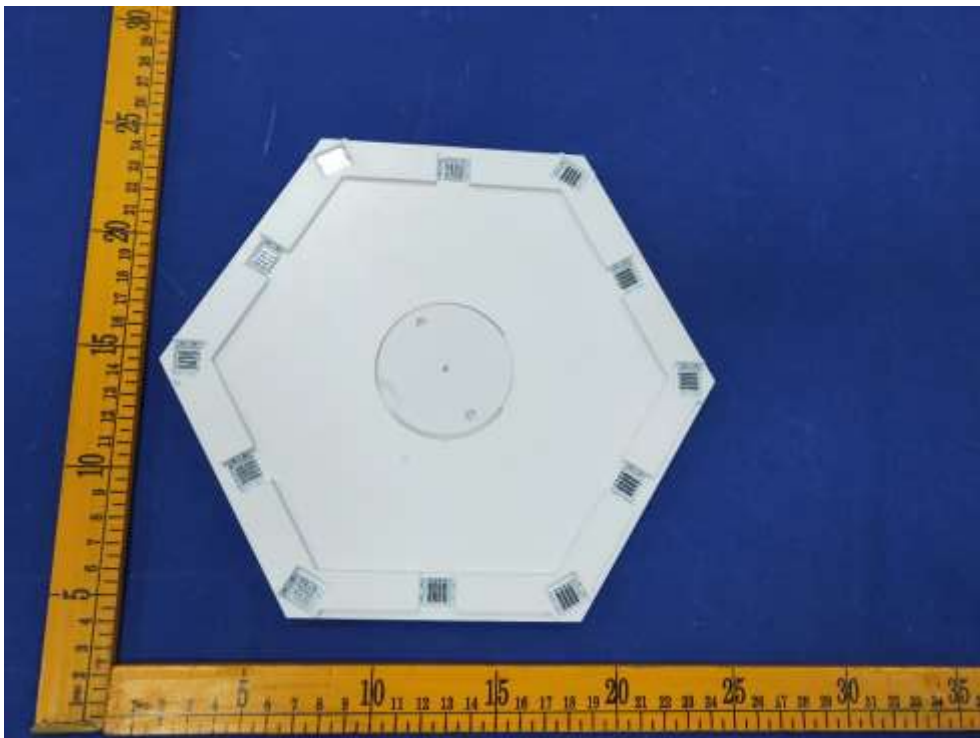


Fig.2 Overall view

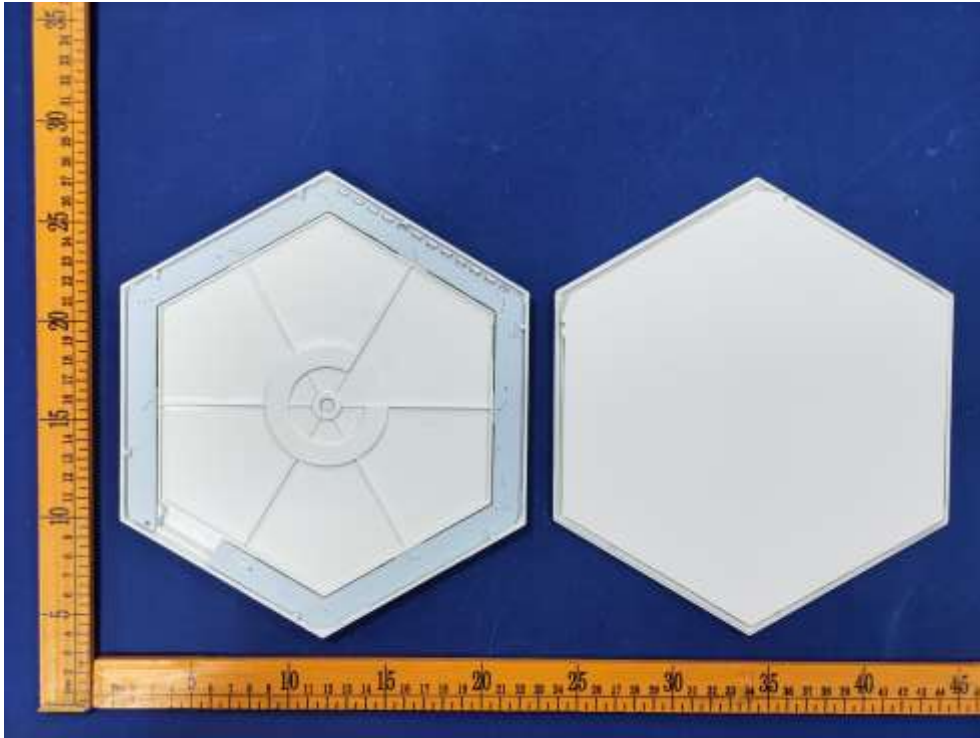


Fig.3 Internal view

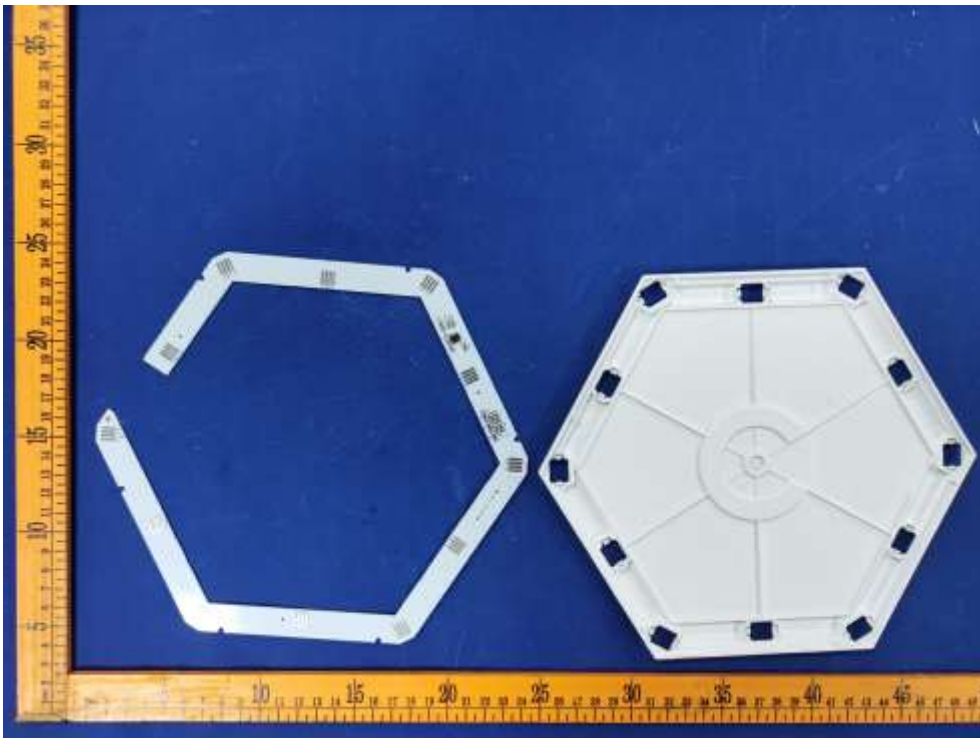


Fig.4 Internal view

*** End of Report ***